

TO:

FROM: ARND.SPIERING@GON.DE

SUBJECT: COLDFUSION AUF WINDOWS SERVER

DATE: 19.09.2011

Inhalt

Dieses Dokument beschreibt die ColdFusion 9 Installation auf einem Windows 2008 Server 64 Bit. Nach der Erstinstallation der ColdFusion Version 9.0 erfolgt das Update auf die ColdFusion 9.0.1 Version.

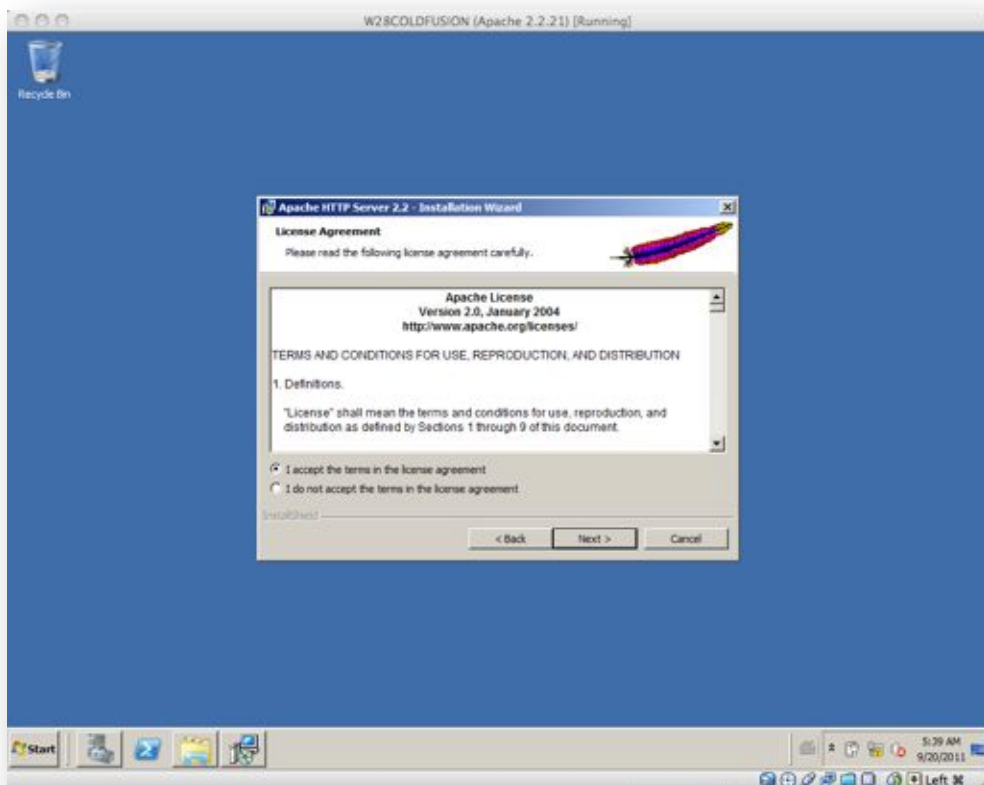
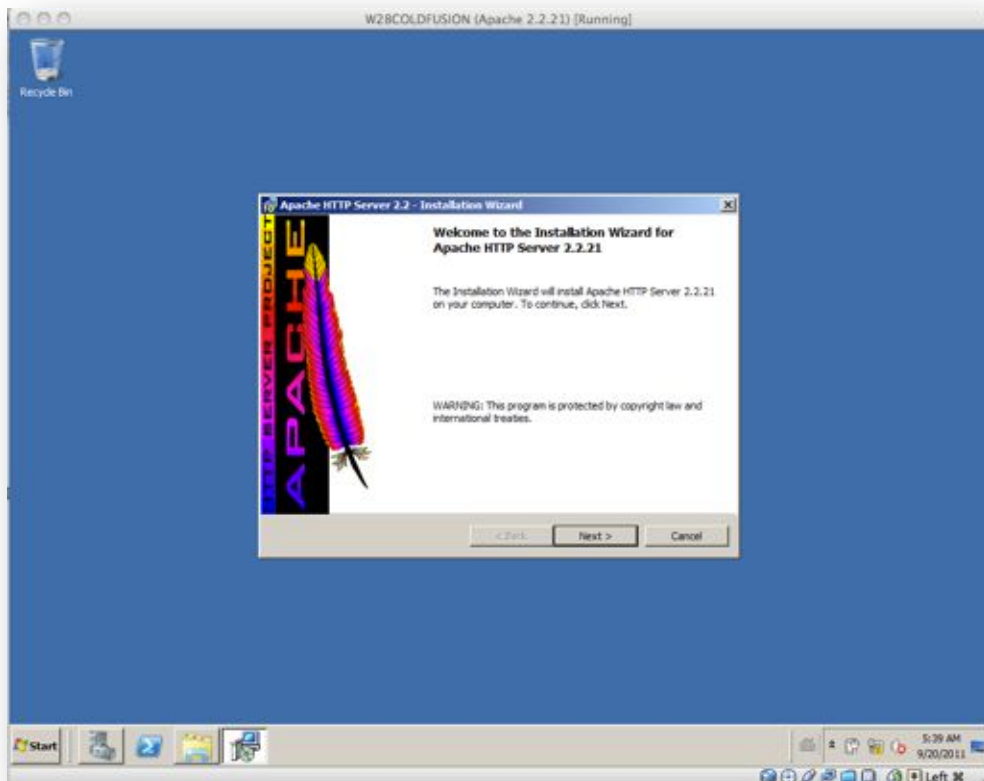
Zum Schluß wir die Installation des ColdFusion Builders 2 auf MAC OSX beschreiben.

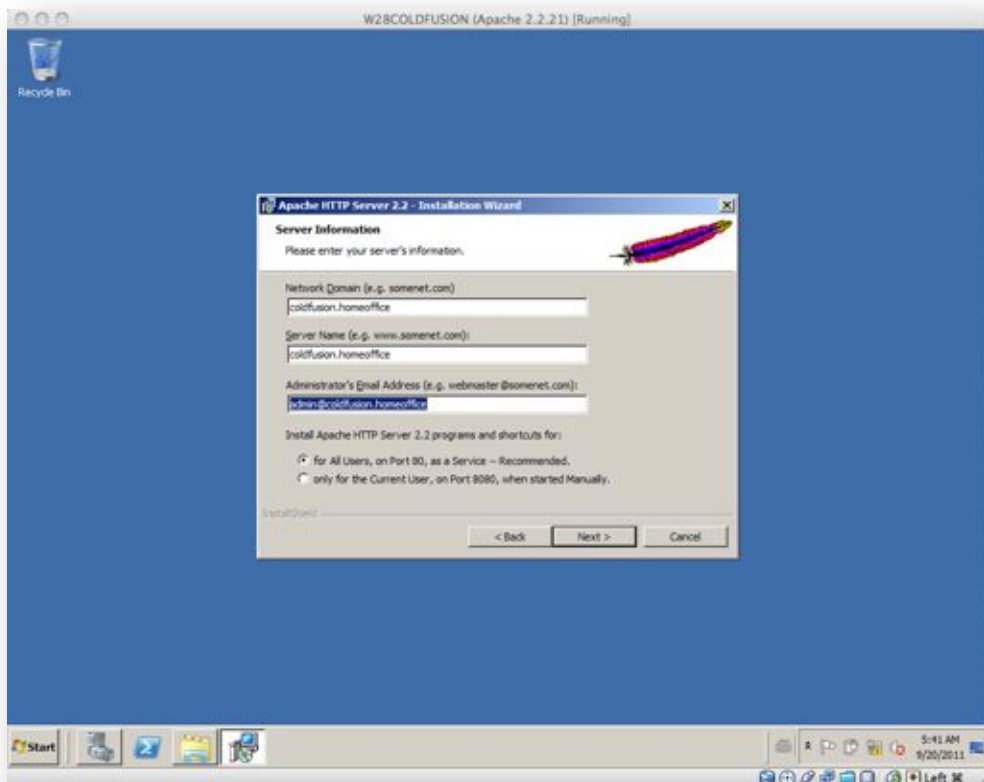
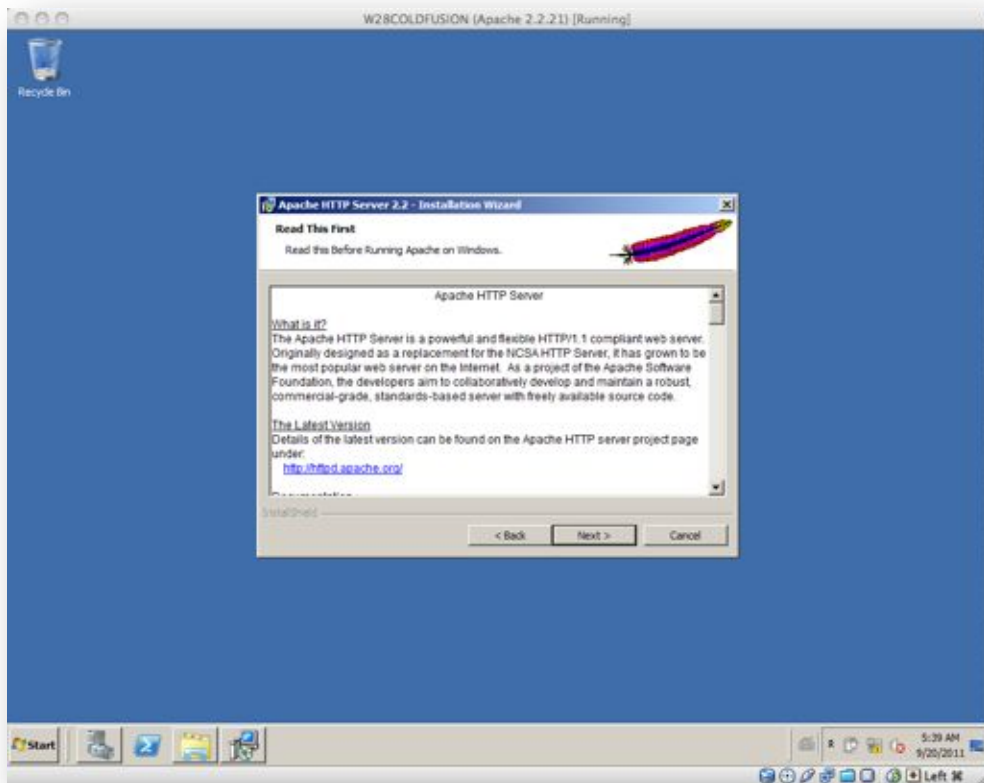
Hinweis. Die Apache Version liegt nur in einer 32 Bit Version vor, funktioniert aber ohne Probleme. Es sollte auch der Einsatz des IIS möglich, das habe ich allerdings nicht getestet.

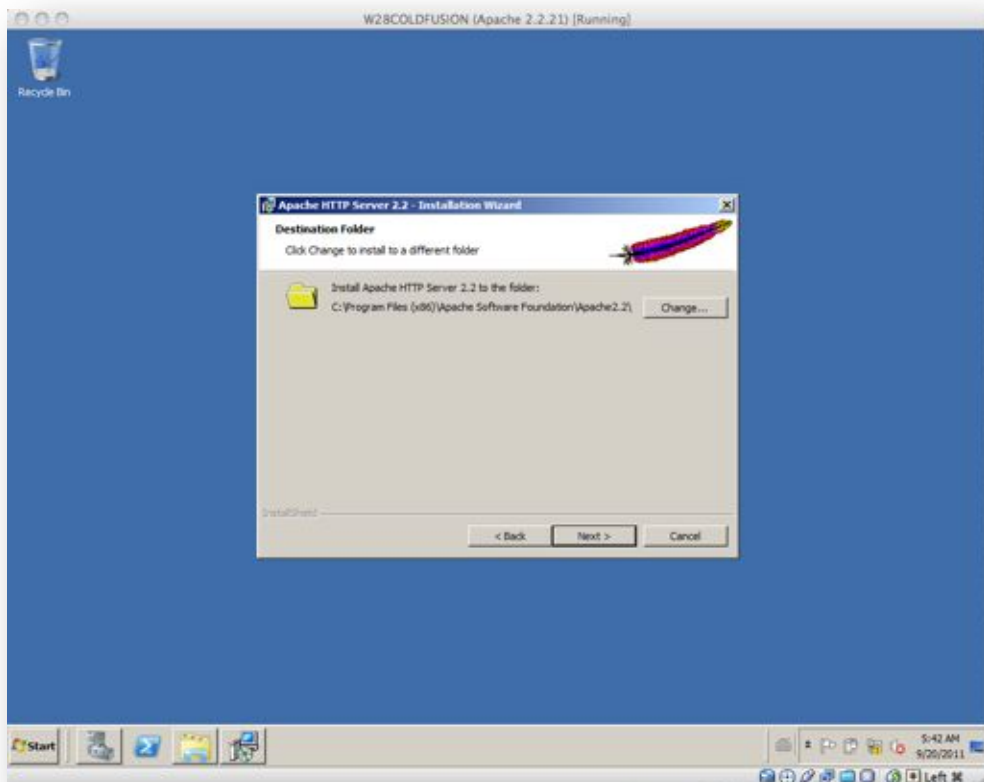
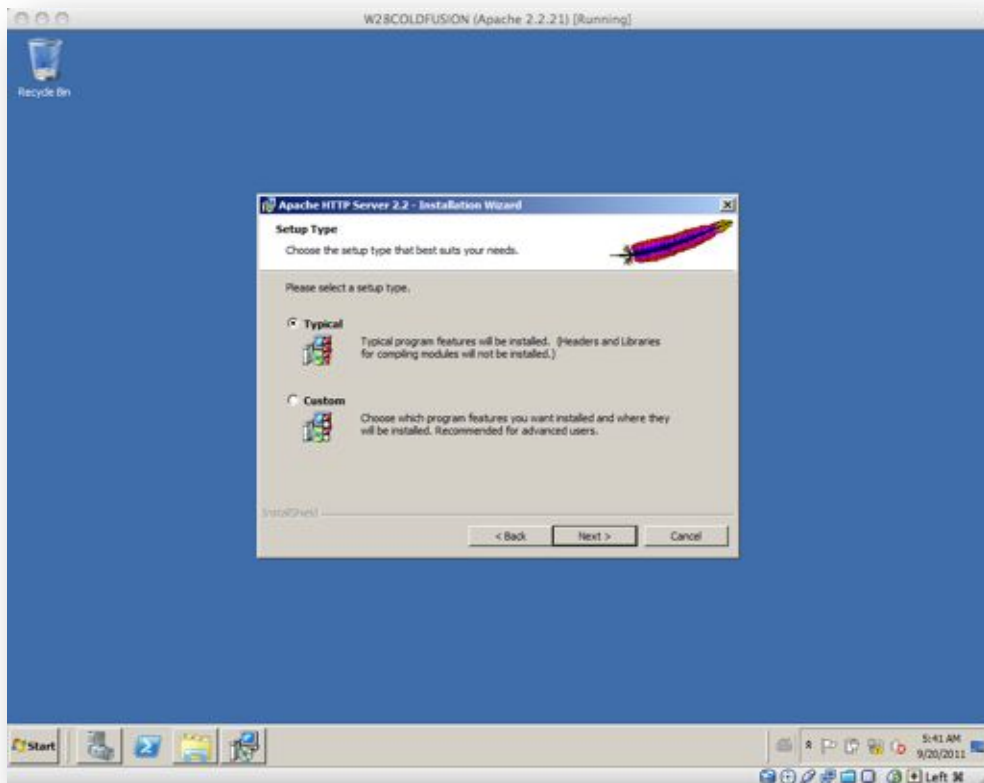
Referenzierender Link:

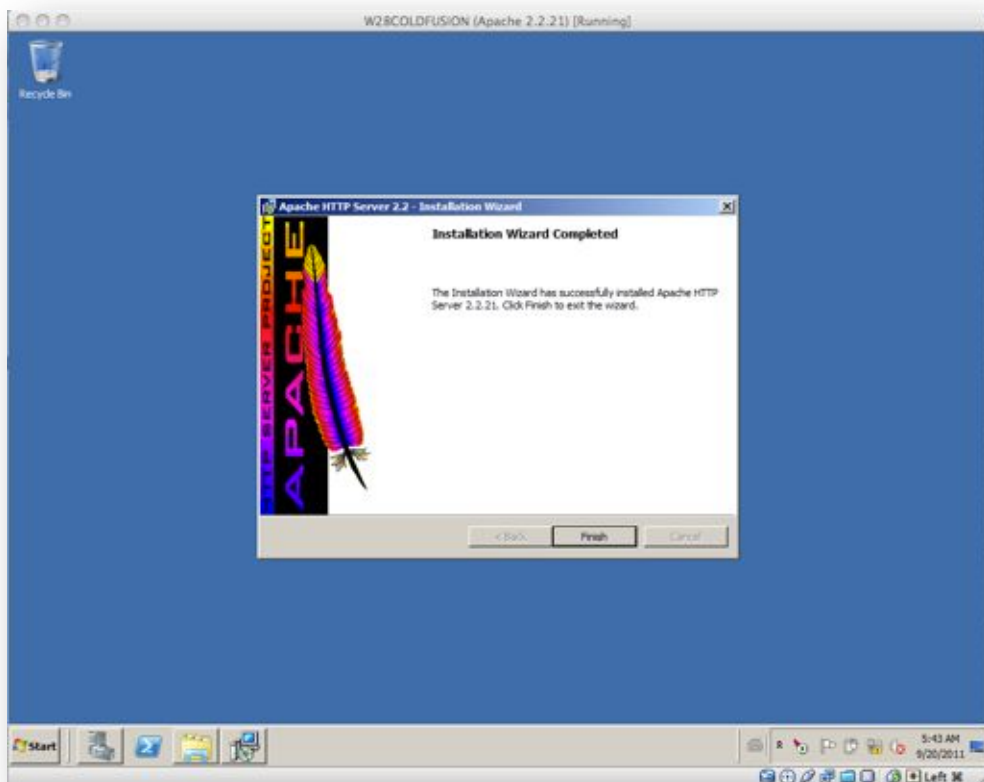
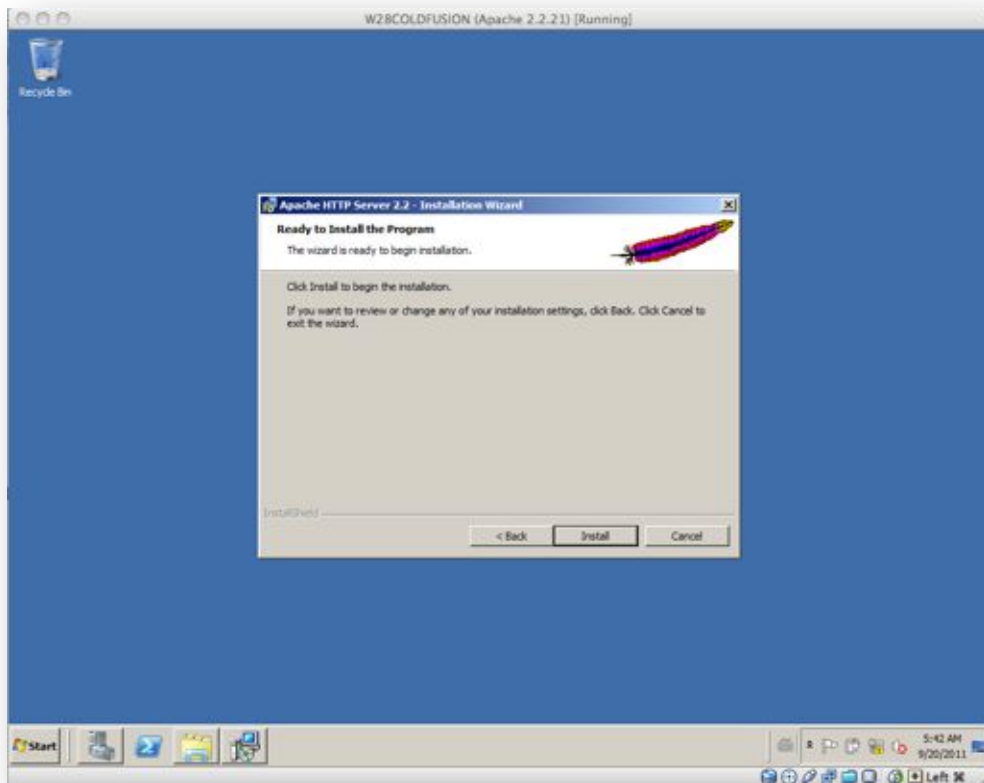
http://www.adobe.com/devnet/coldfusion/articles/setup_dev.html

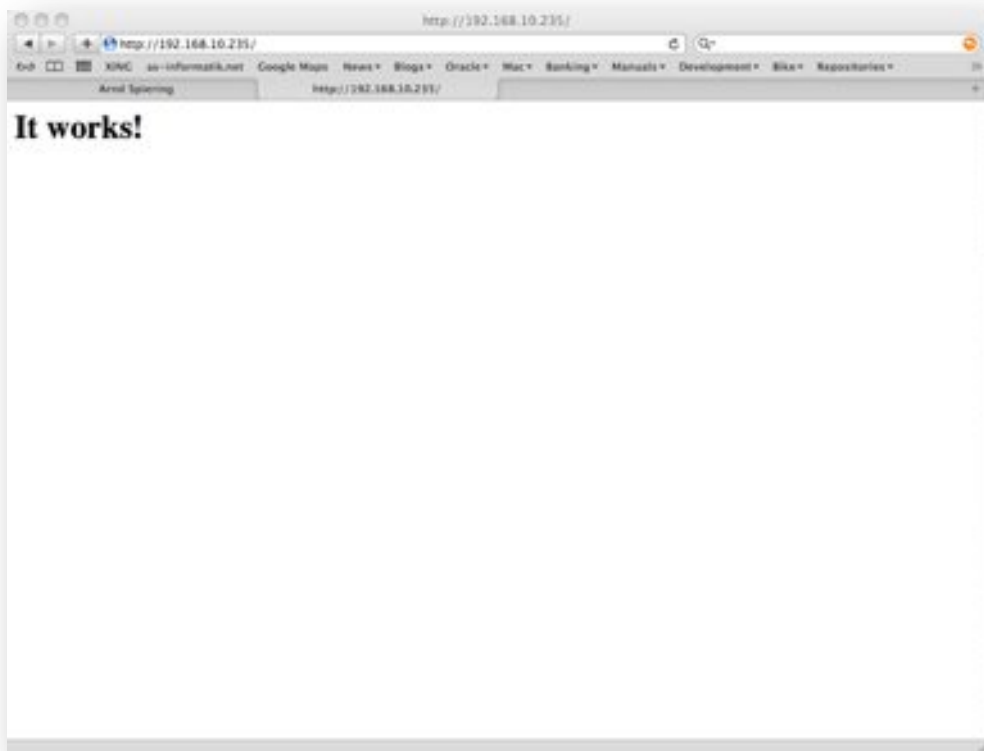
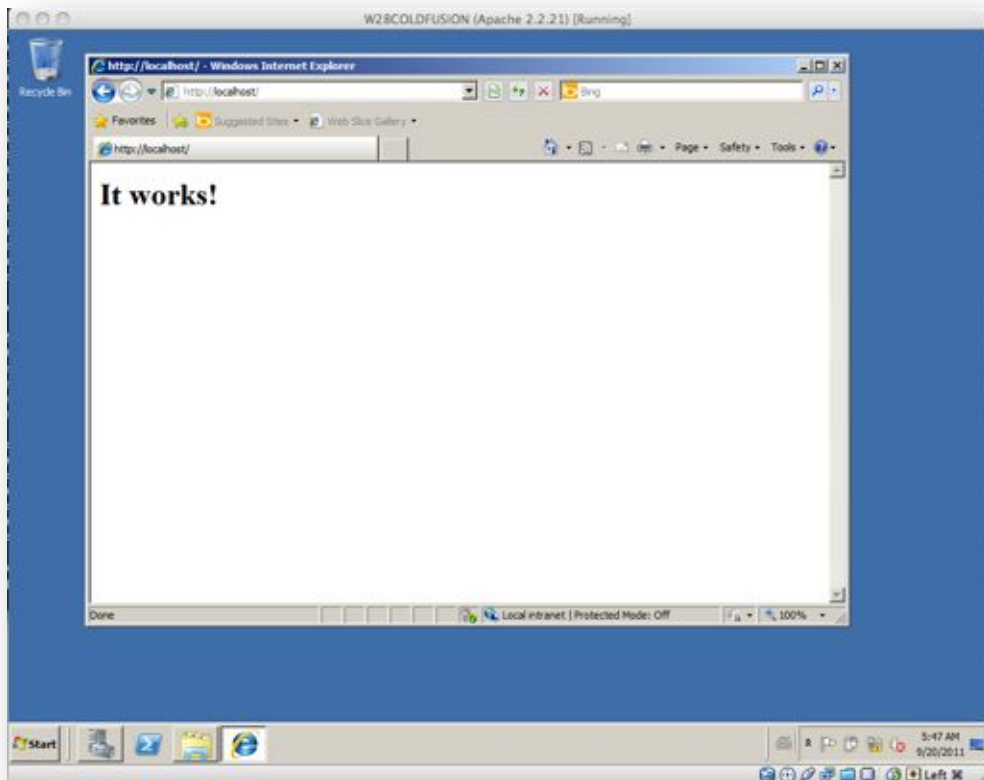
Apache 2.2.21 Installation





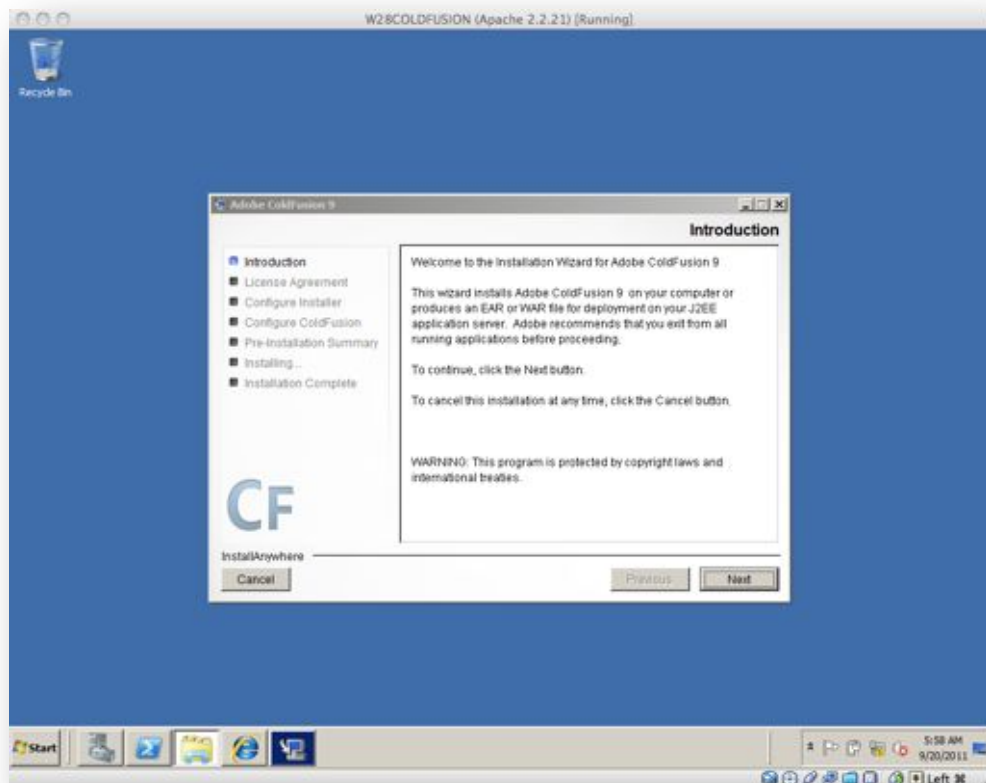
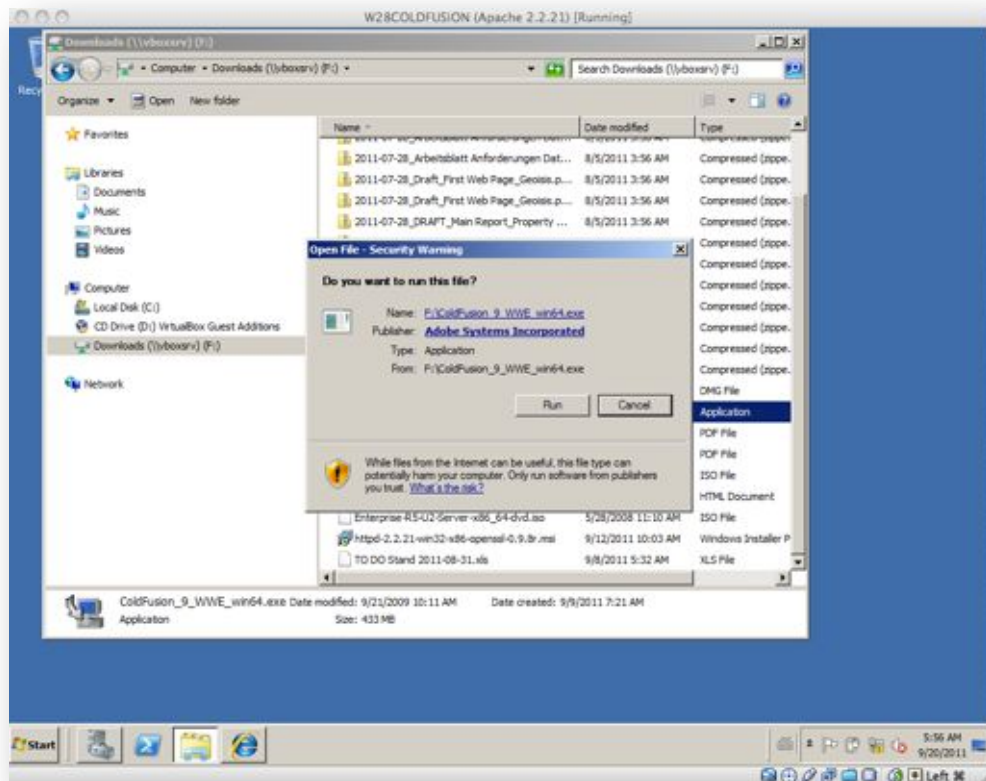


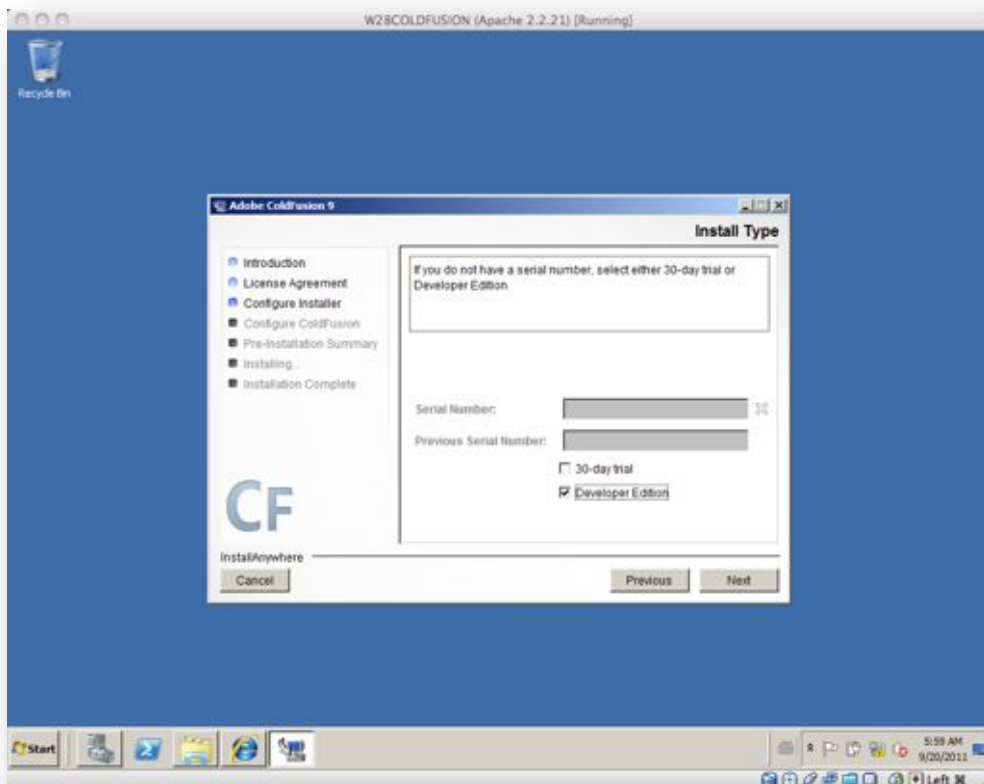
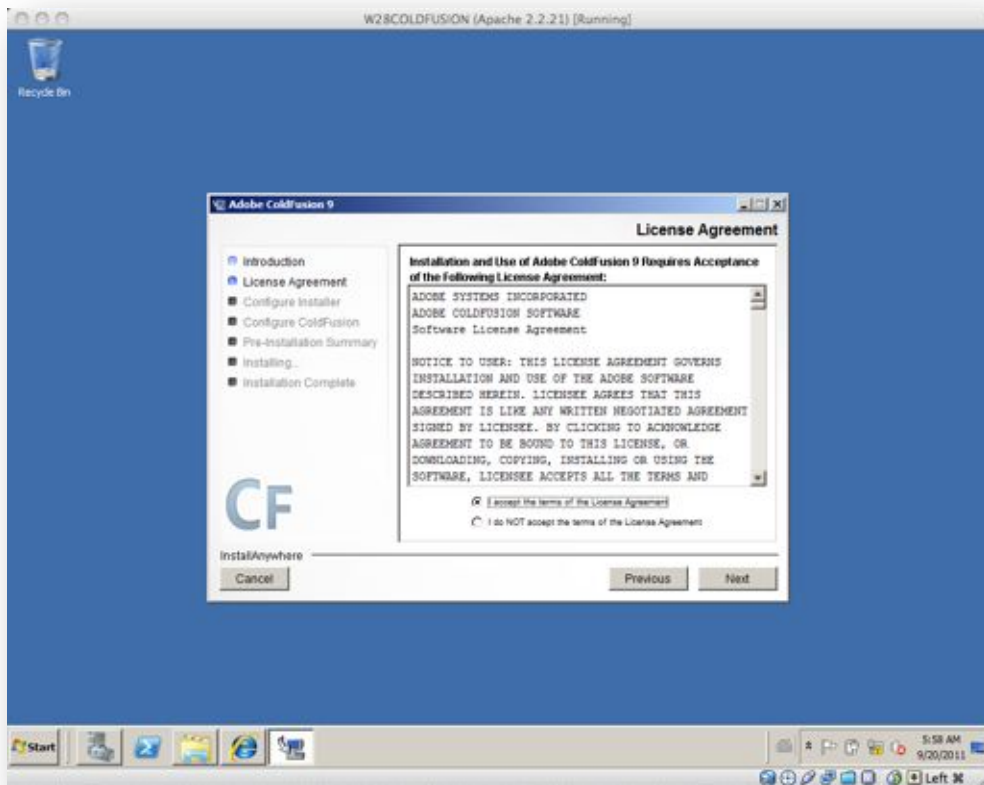




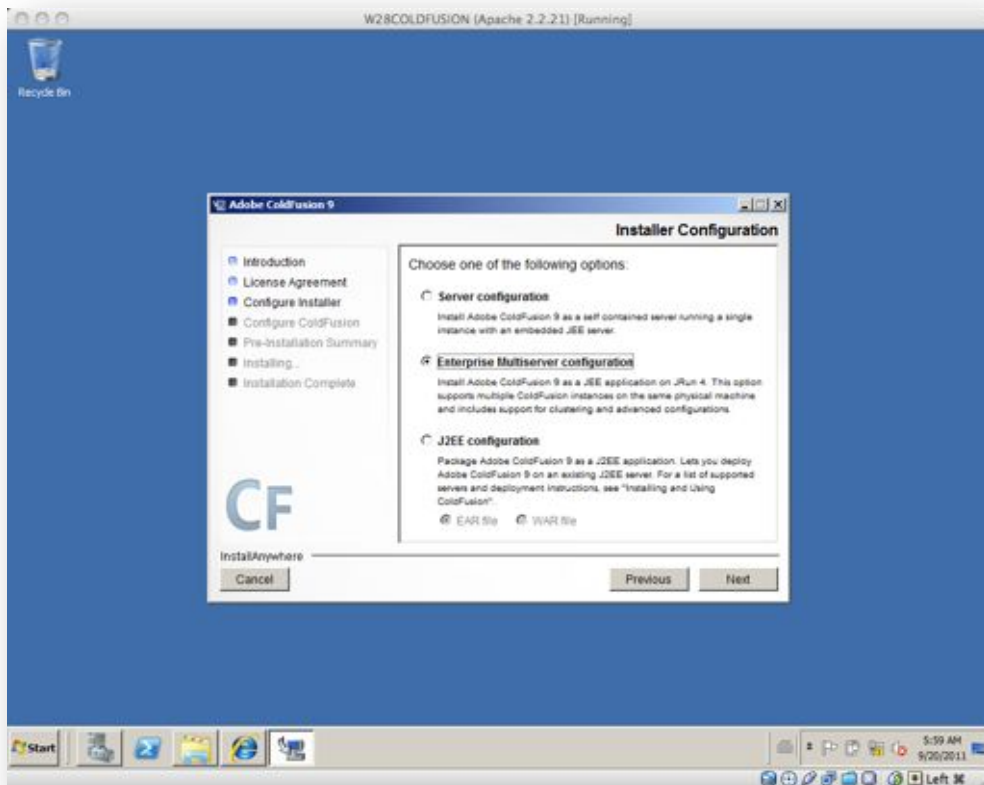
Die Zugriffe funktionieren über localhost auf dem Guest und über das Host Only Netzwerk auch vom Host.

ColdFusion 9.0 Installation

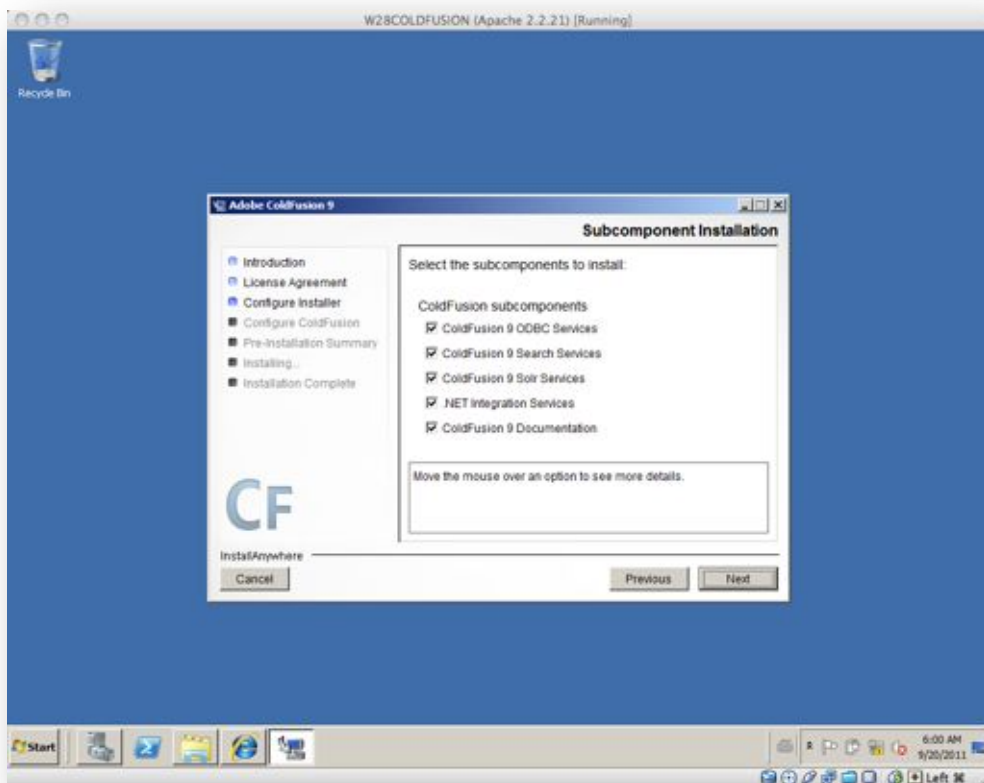


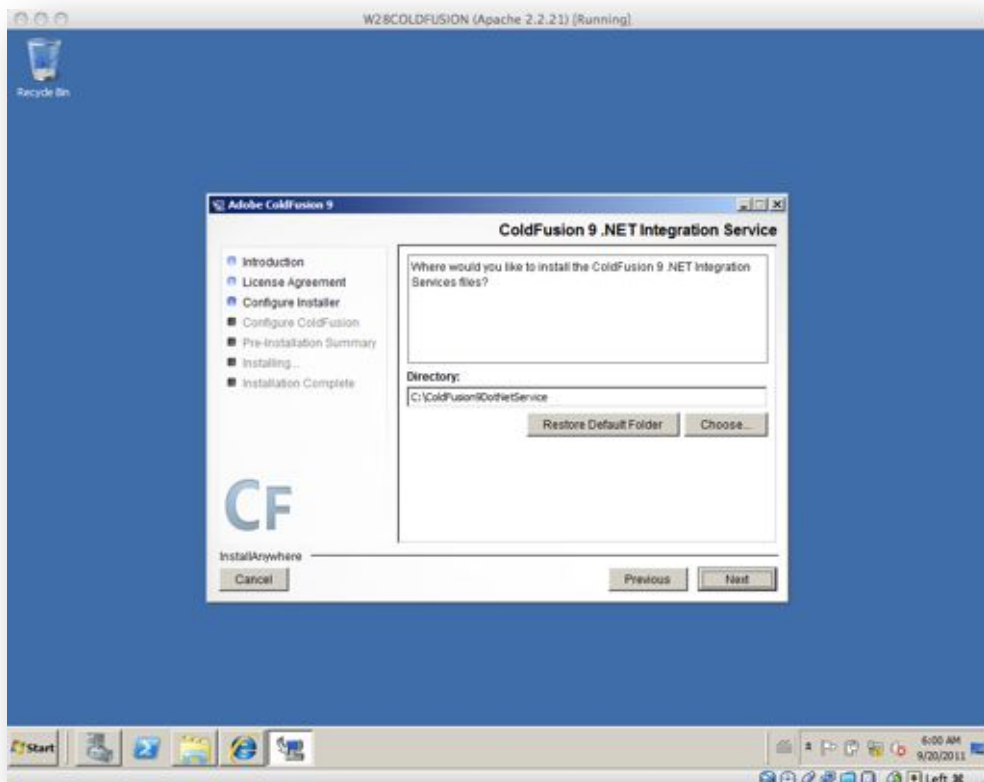
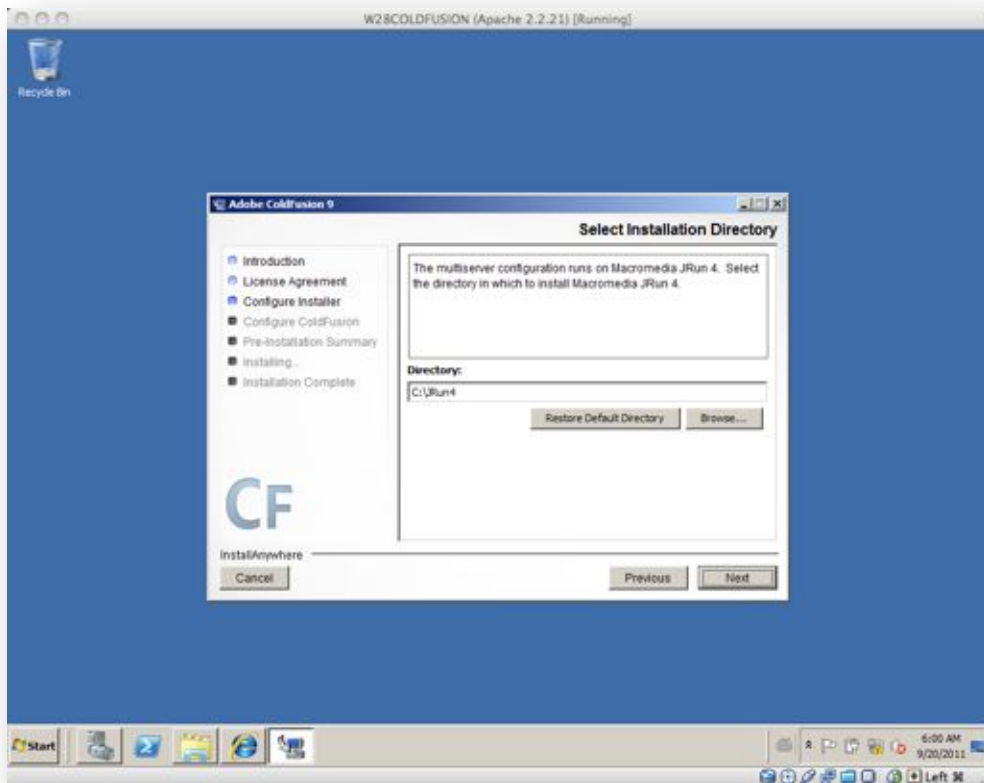


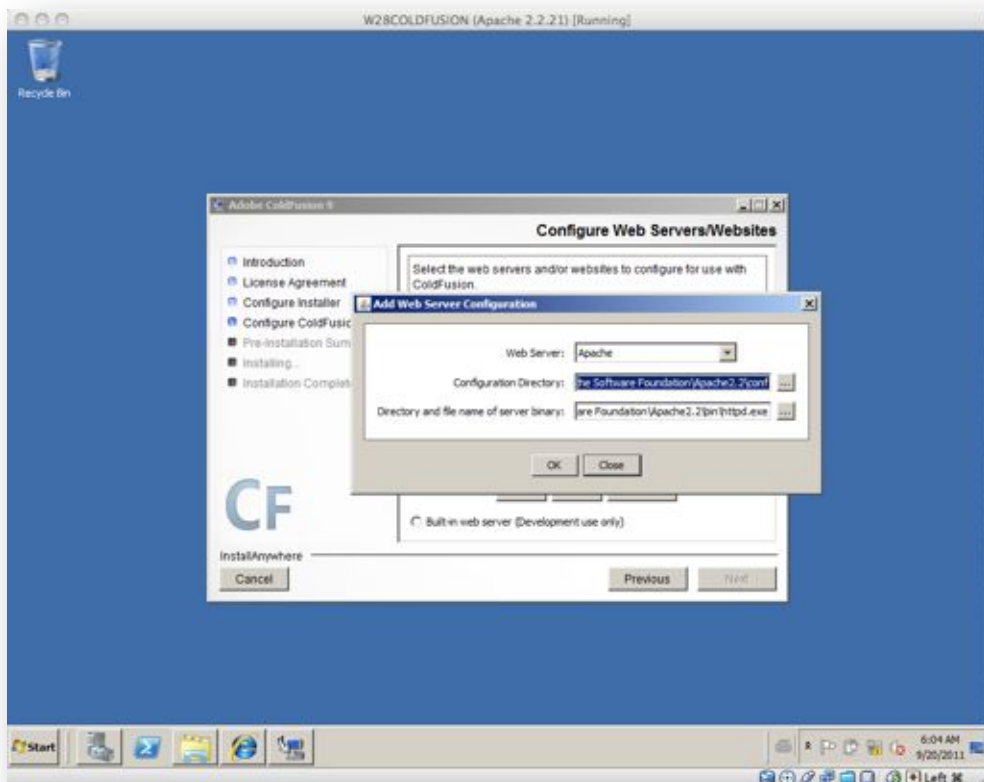
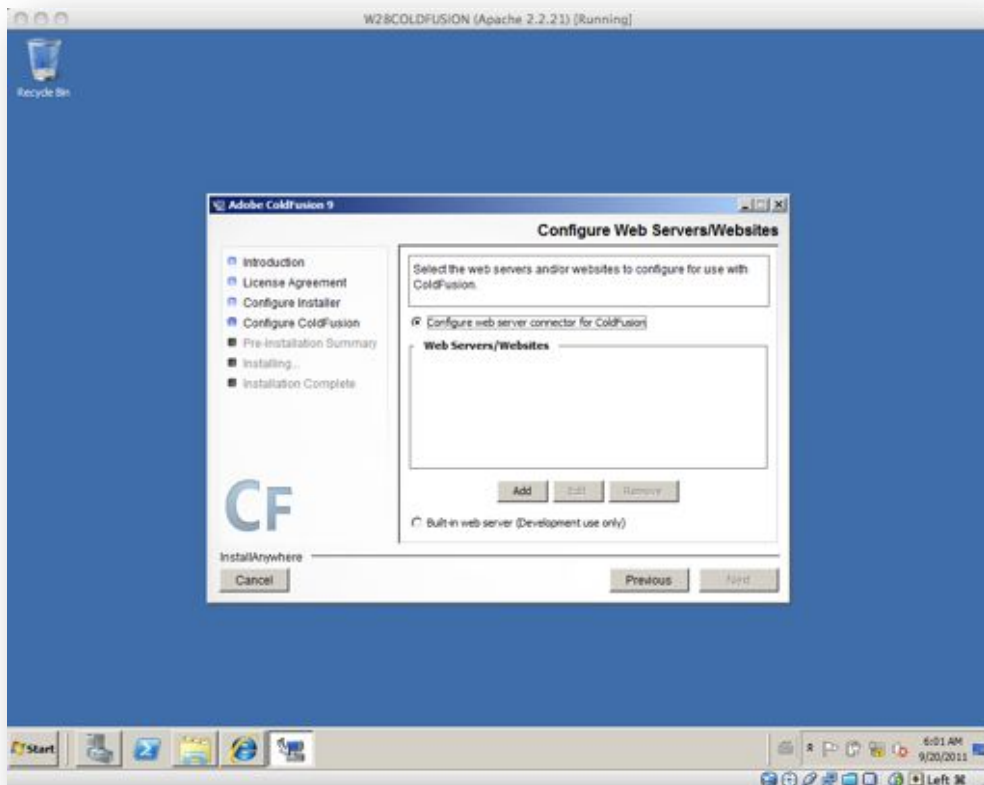
Die Developer Edition ist in den Funktionen nicht eingeschränkt, erlaubt allerdings nur 2 Client IP Adressen.

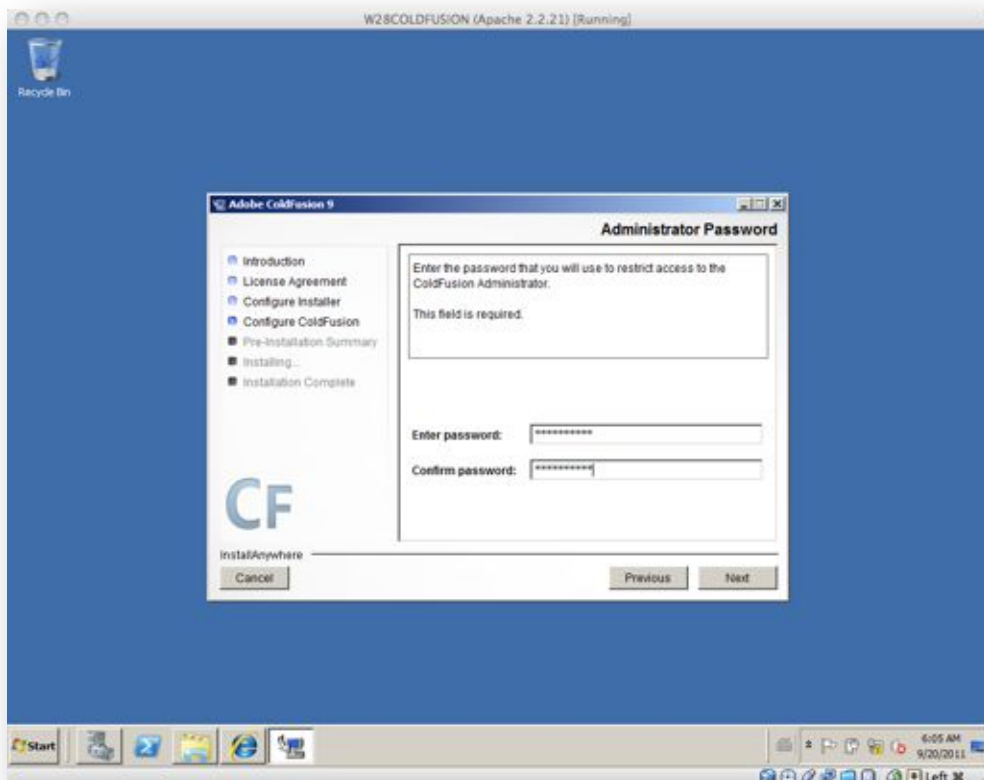
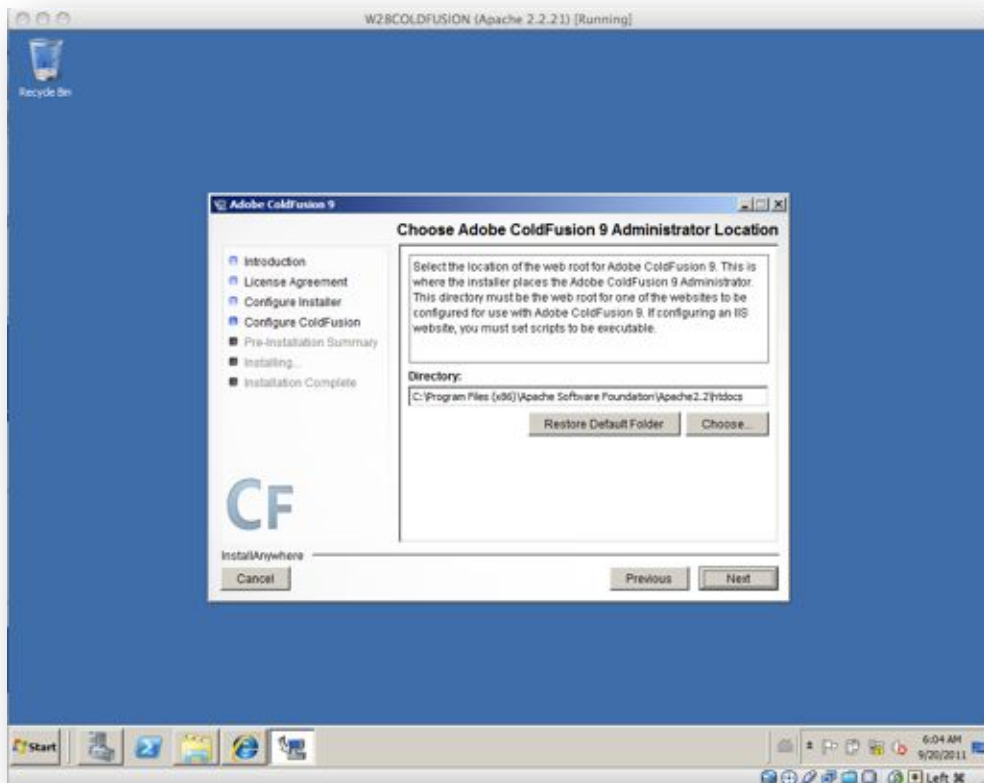


Diese Einstellung ermöglicht den Einsatz mehrerer ColdFusion Instanzen auf einem Server.

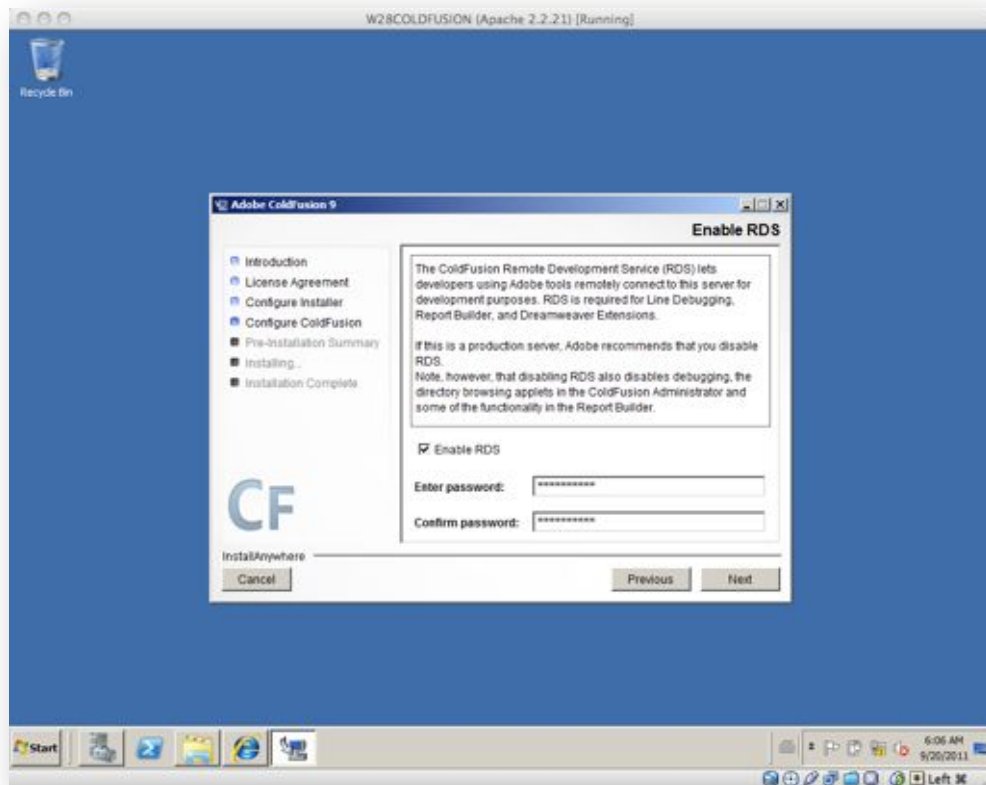




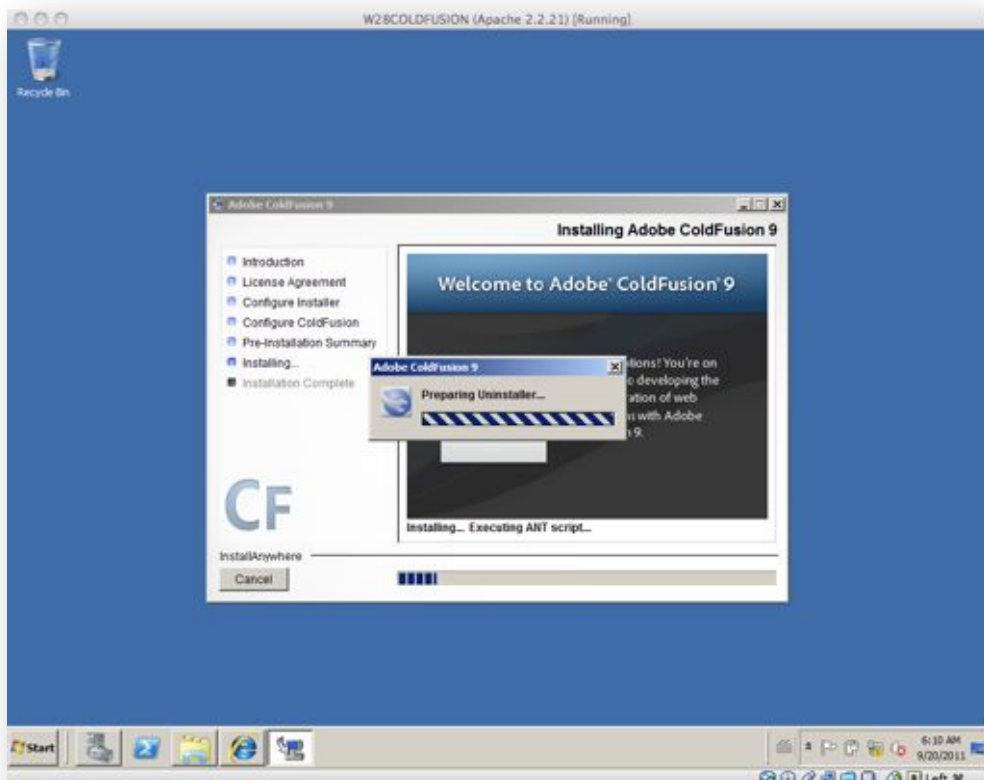
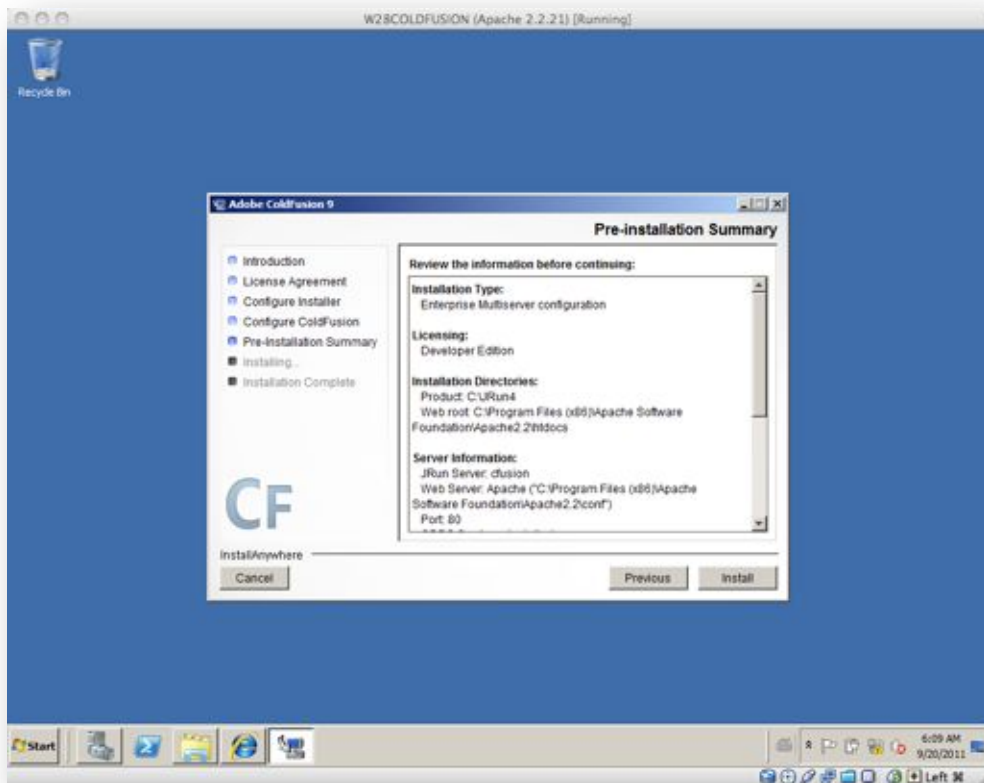


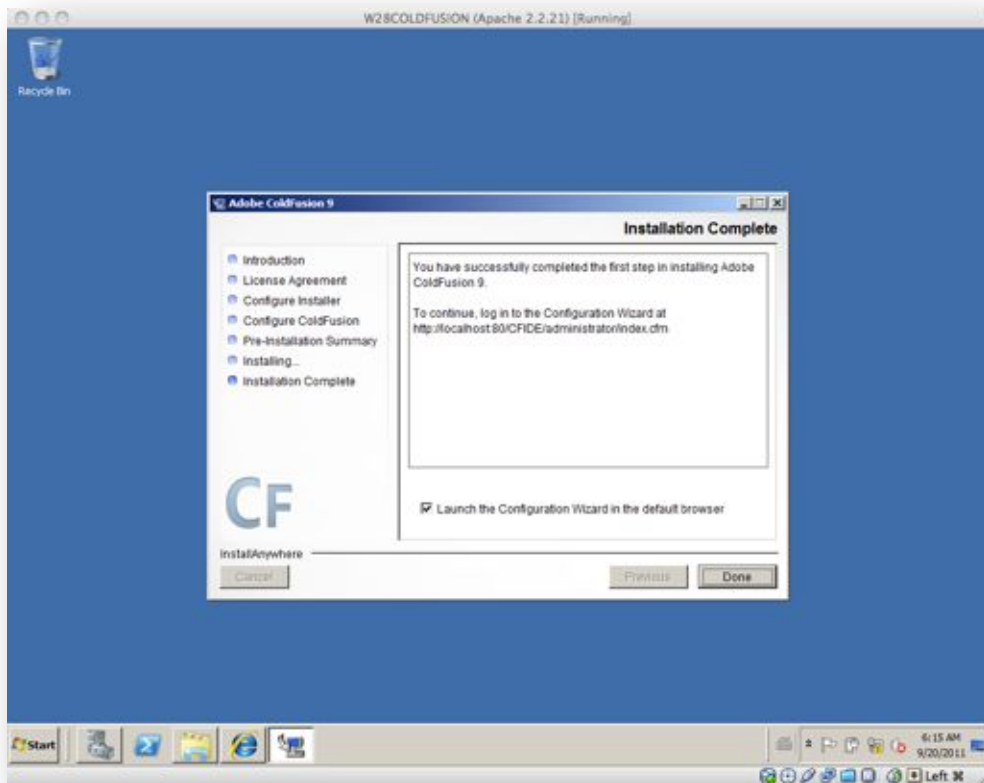


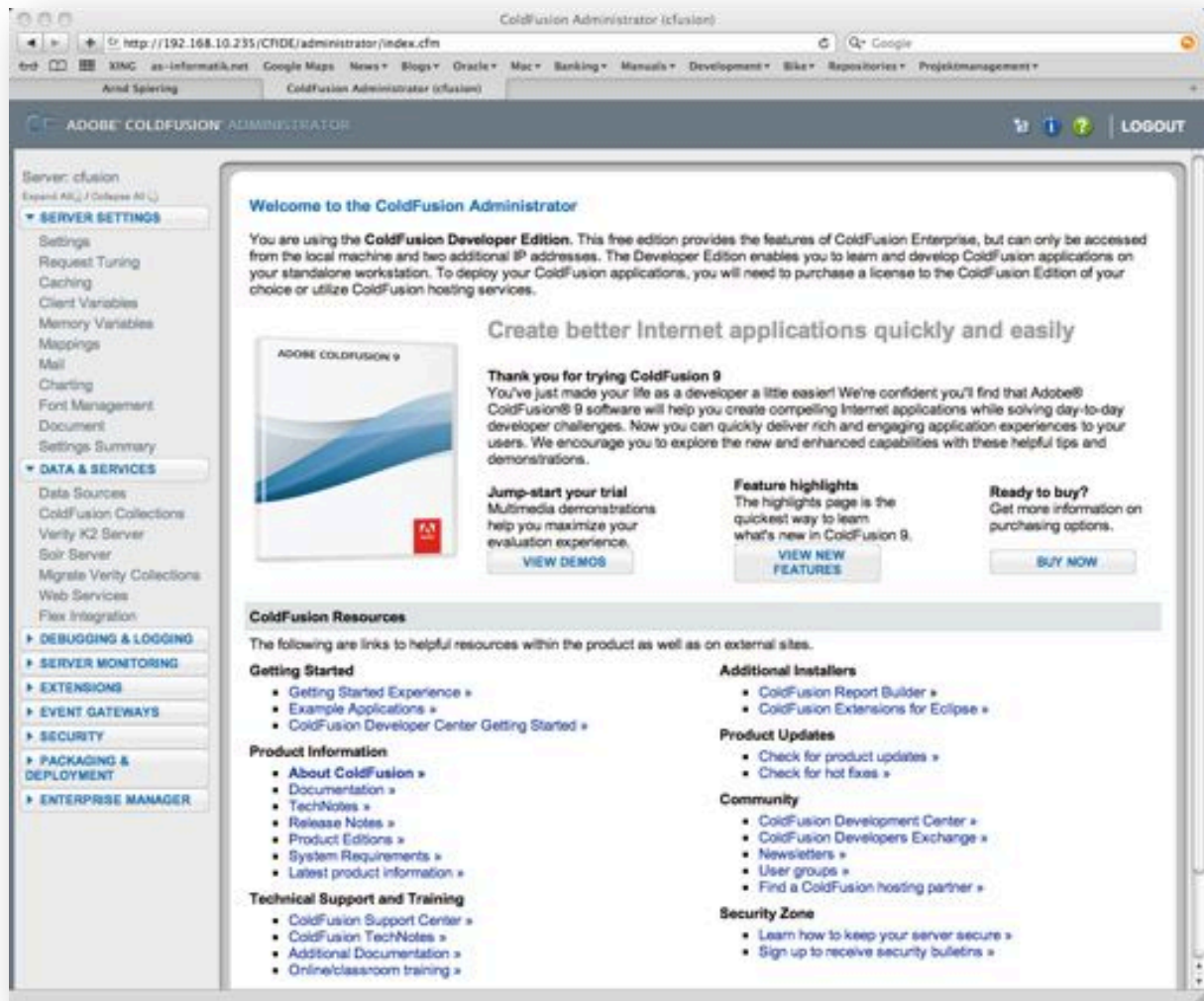
Kennwort: coldfusion



Kennwort: coldfusion

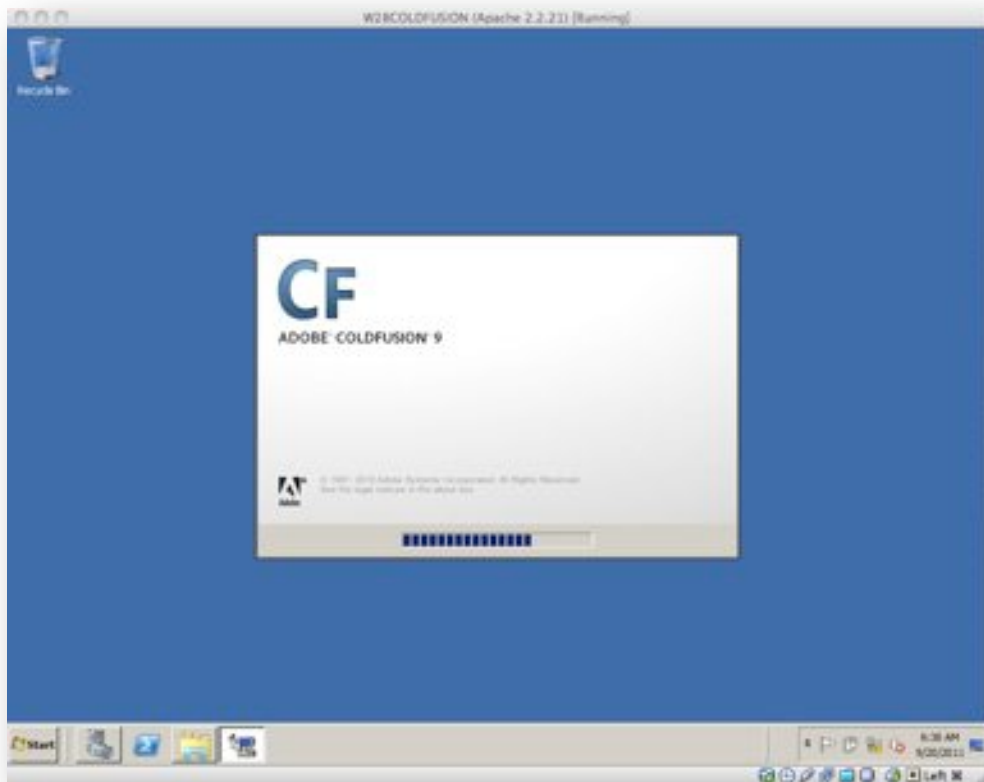


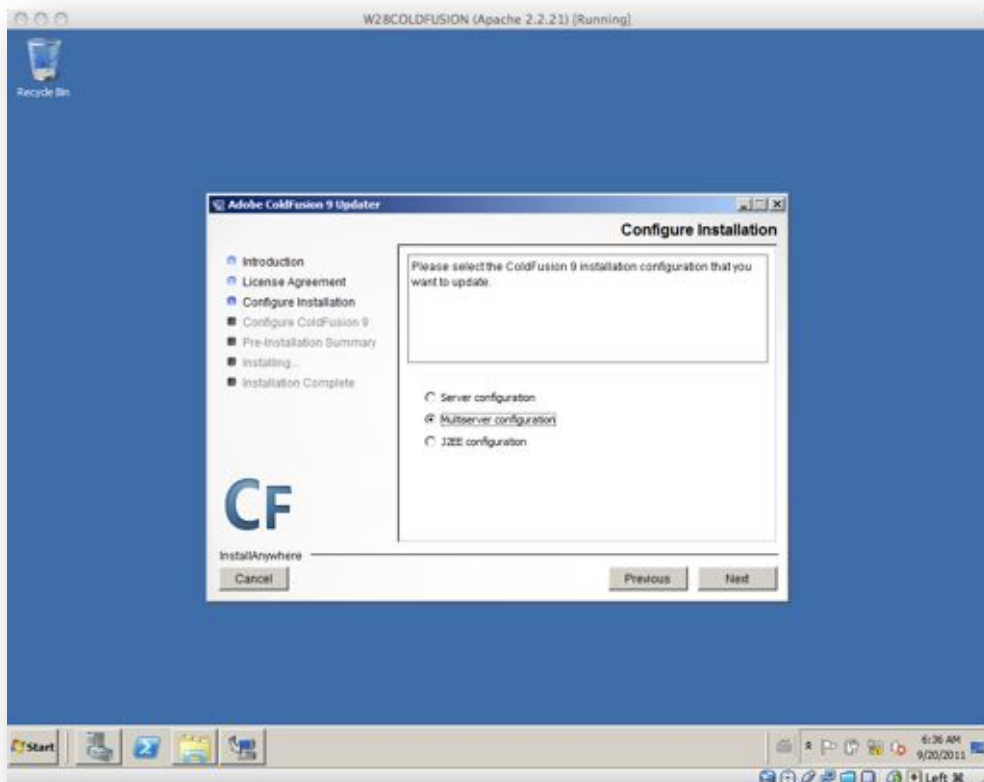
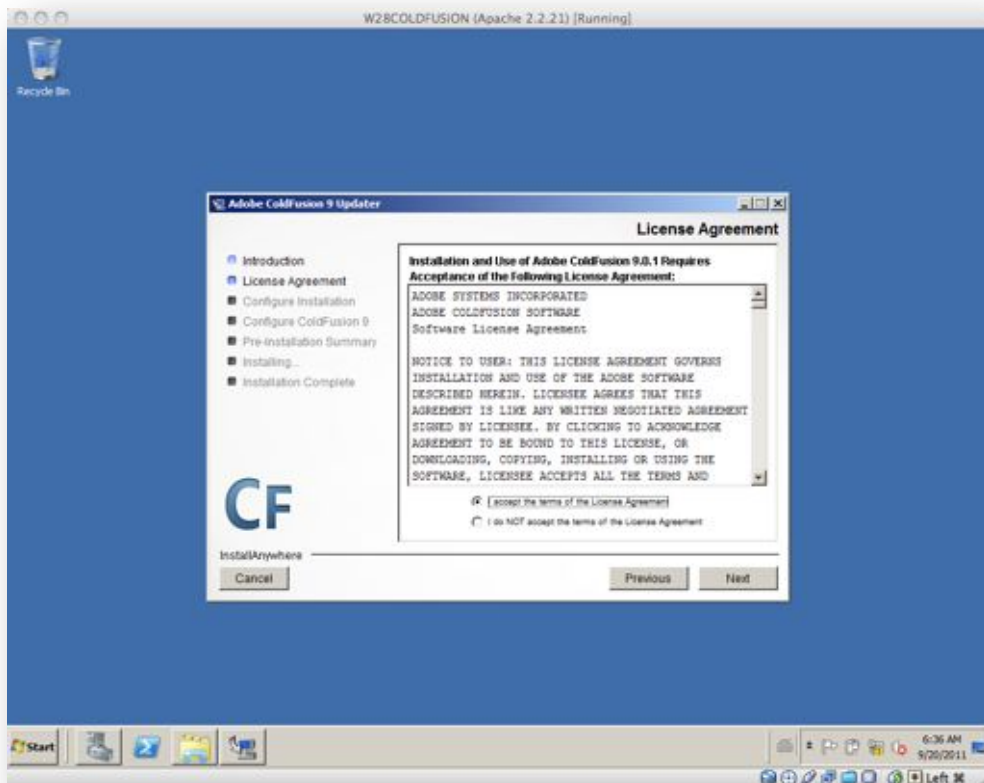




Die Initialisierung des Servers dauert nach der Anmeldung sehr lange!

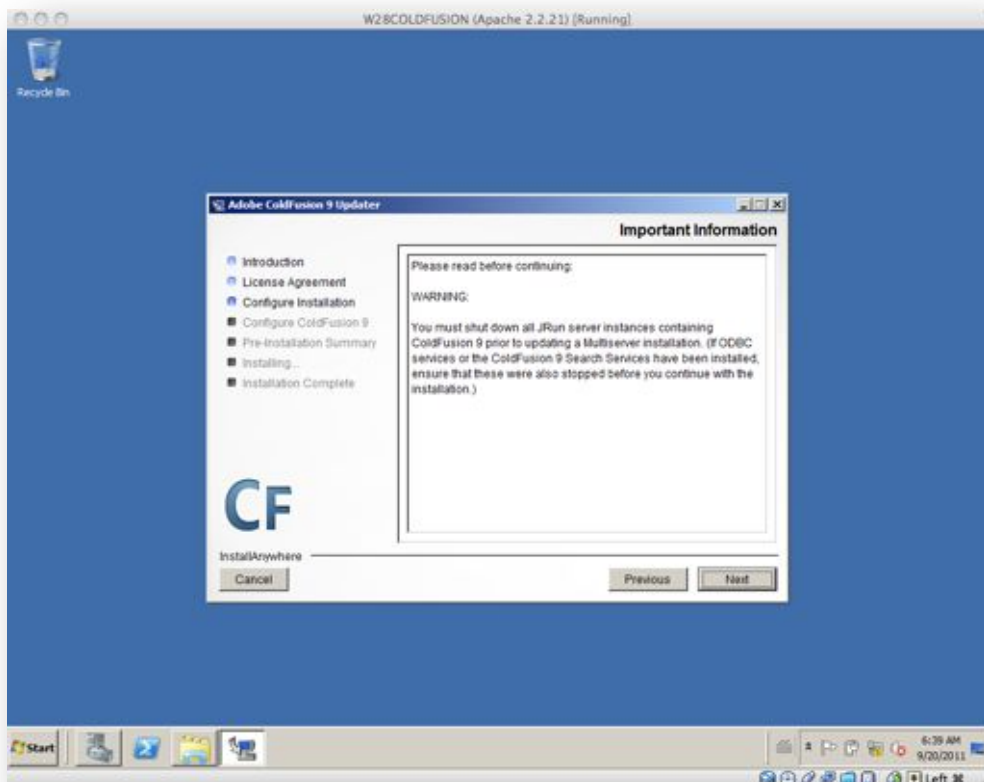
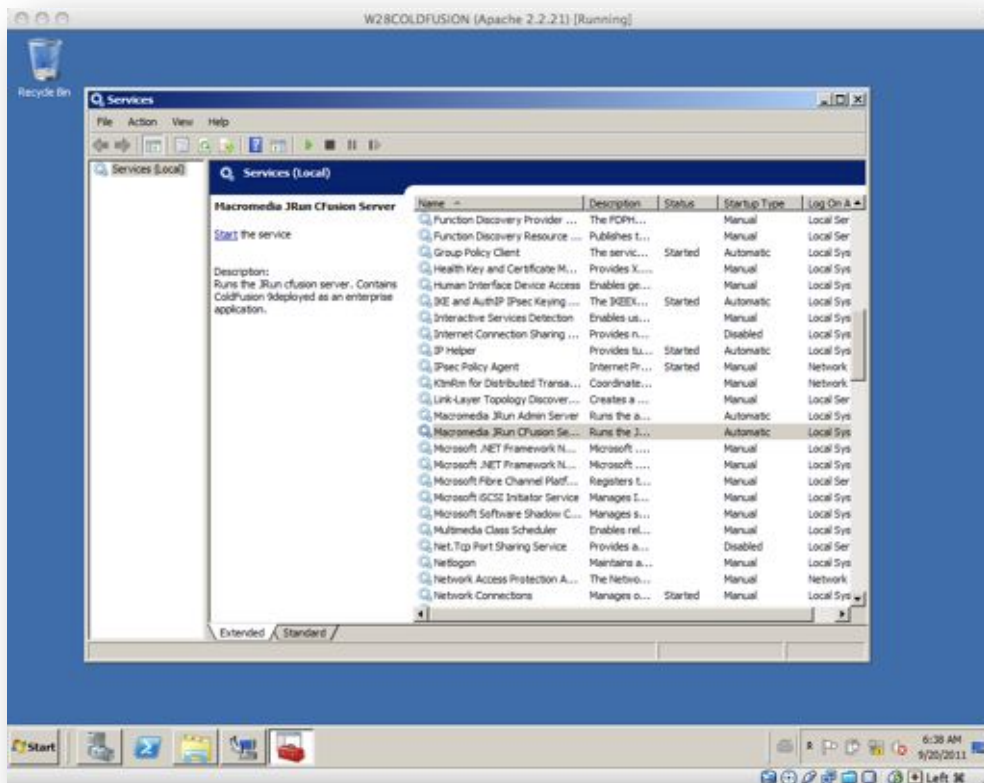
Update auf ColdFusion 9.0.1

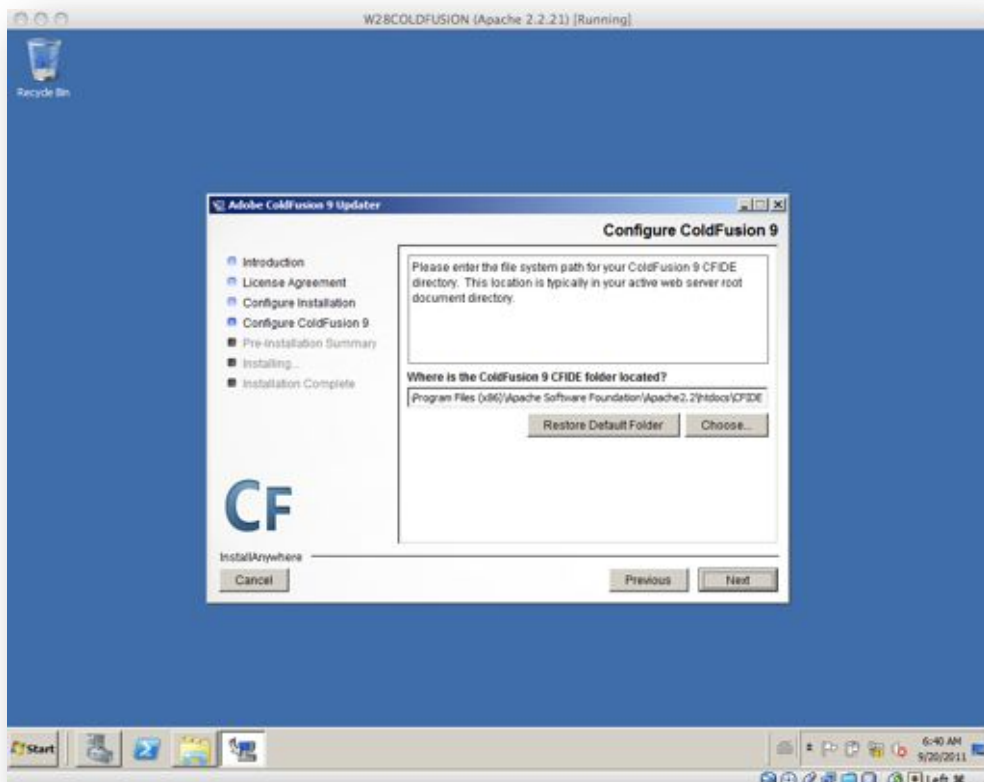
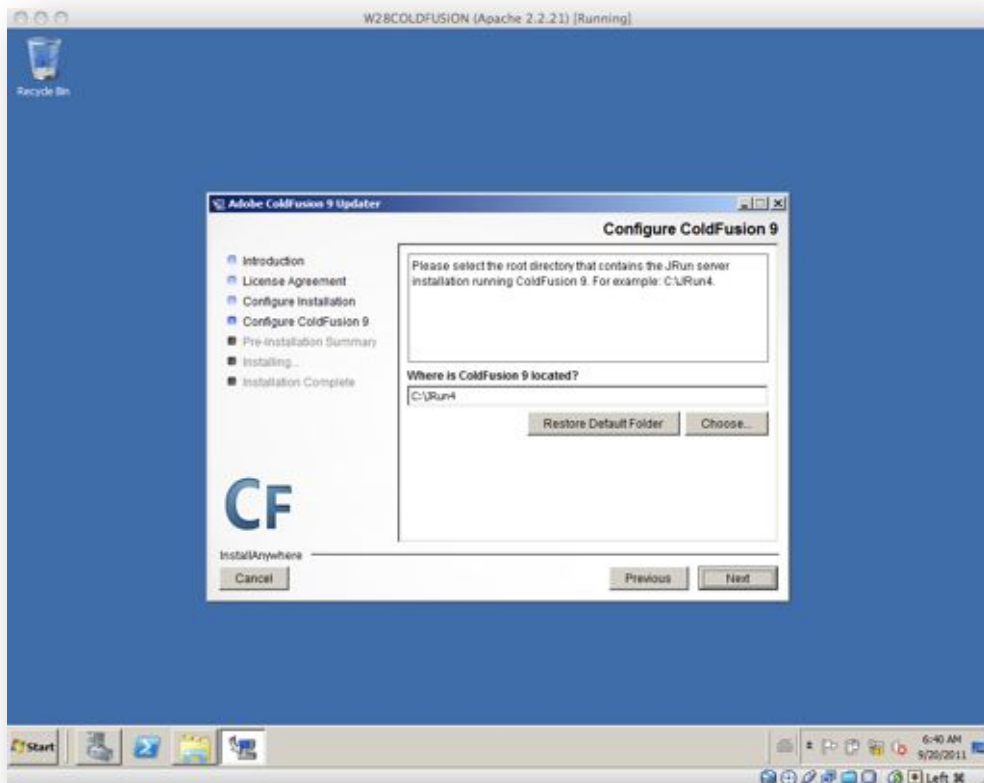


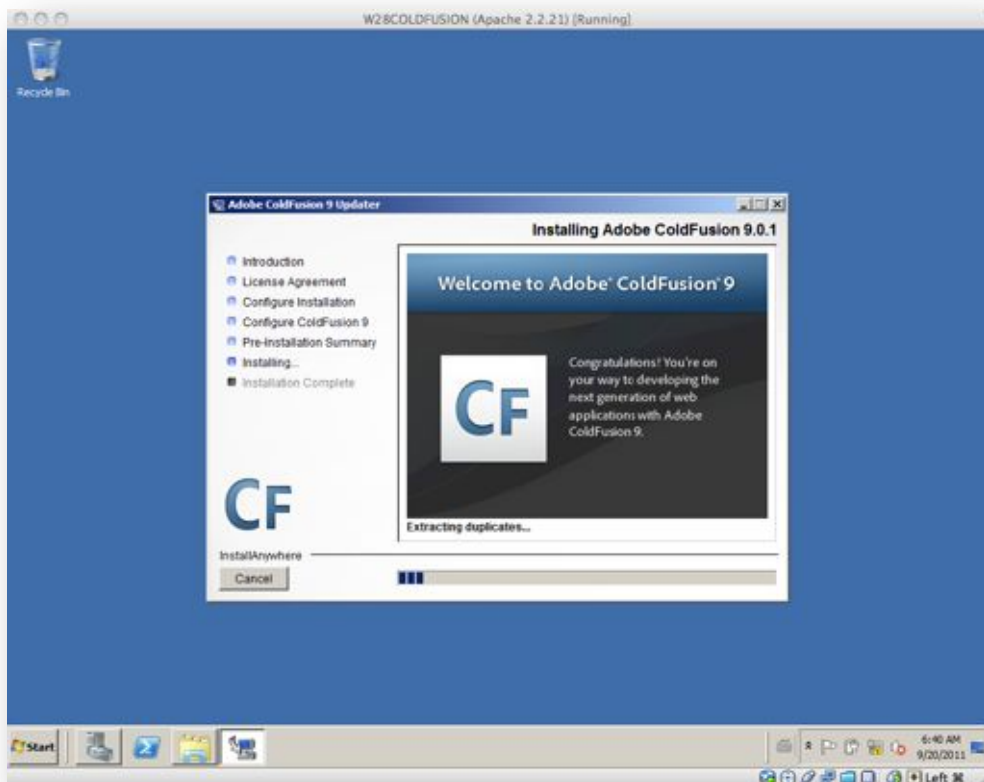
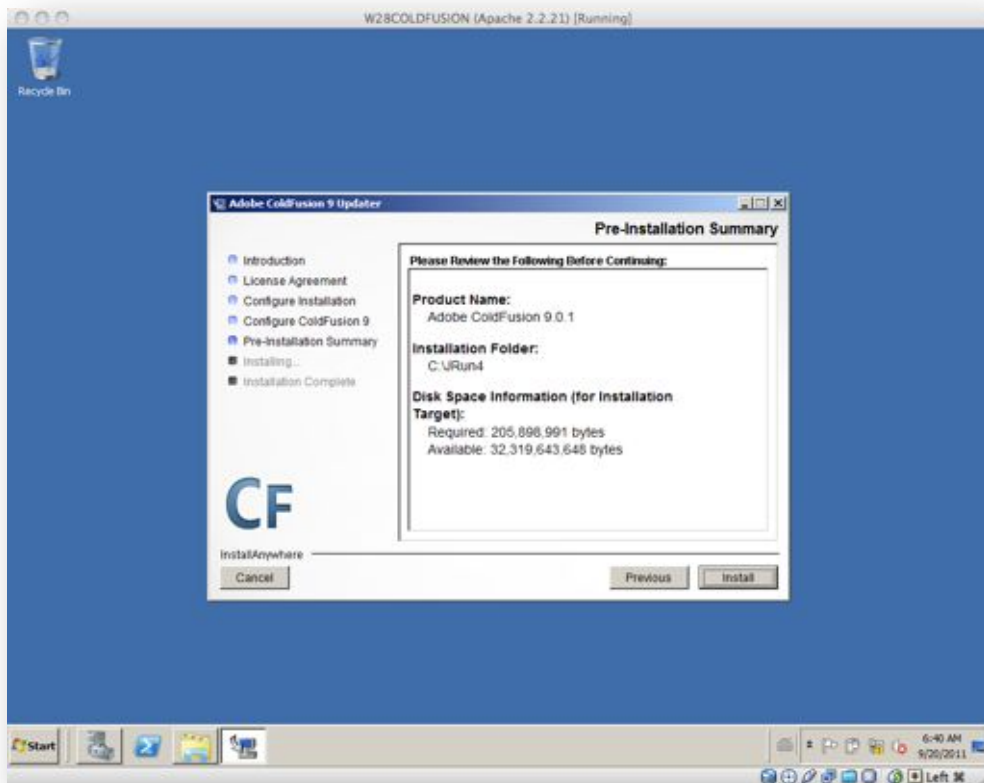


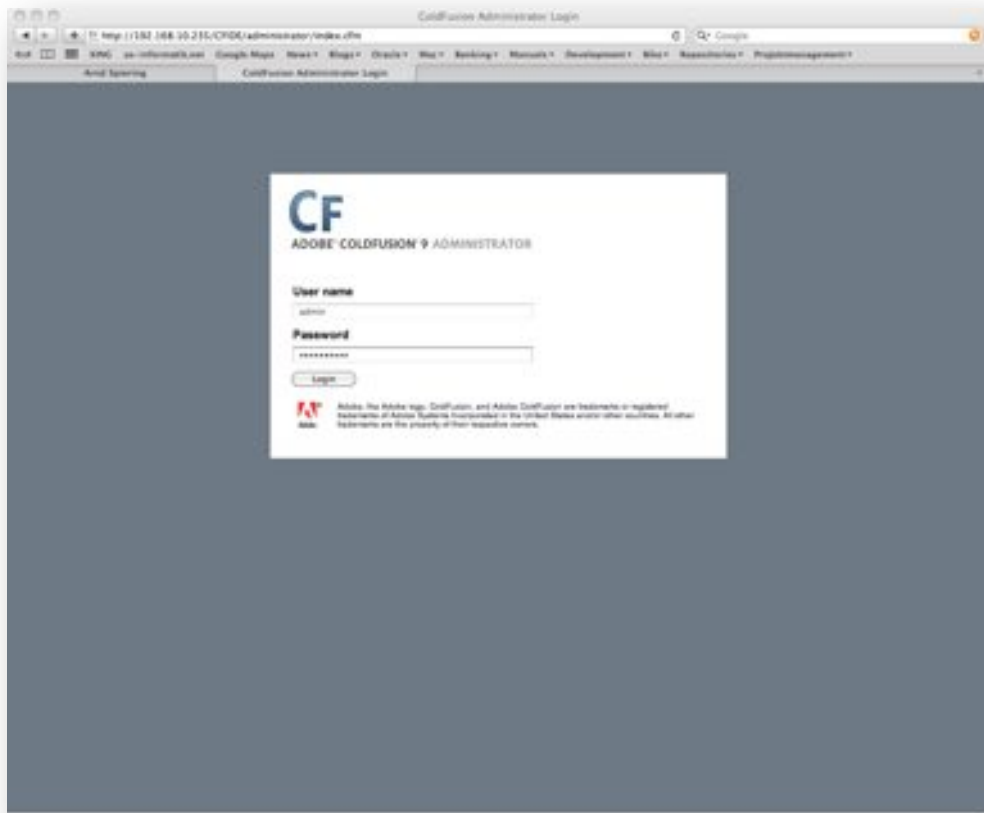
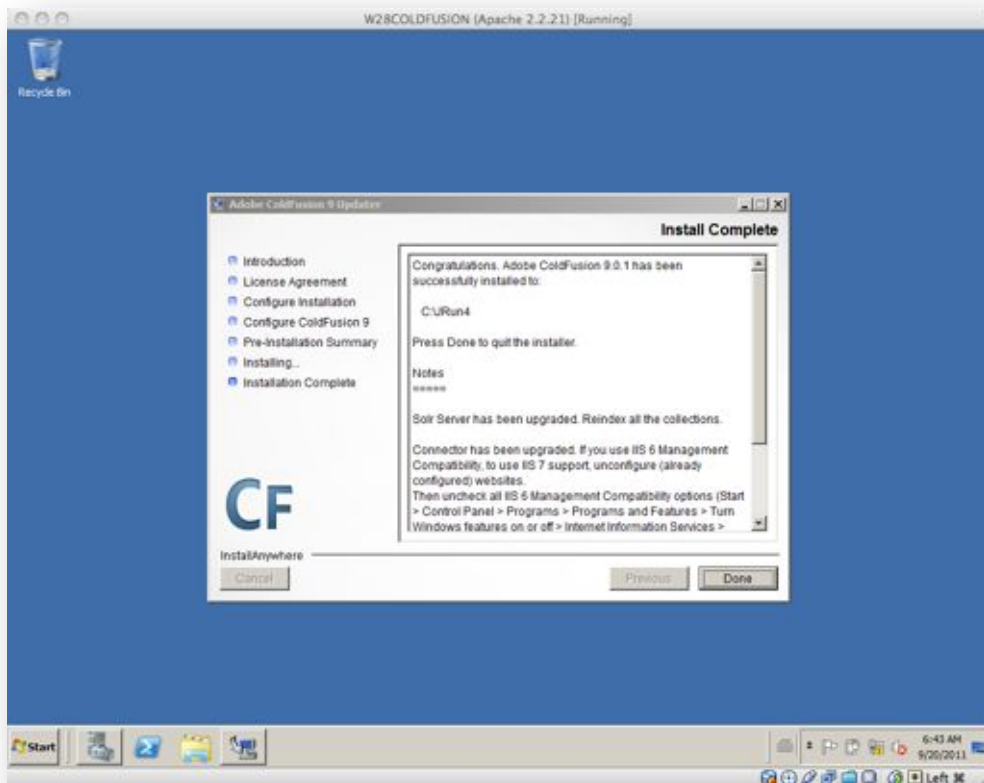
Jetzt folgende Dienste manuell stoppen:

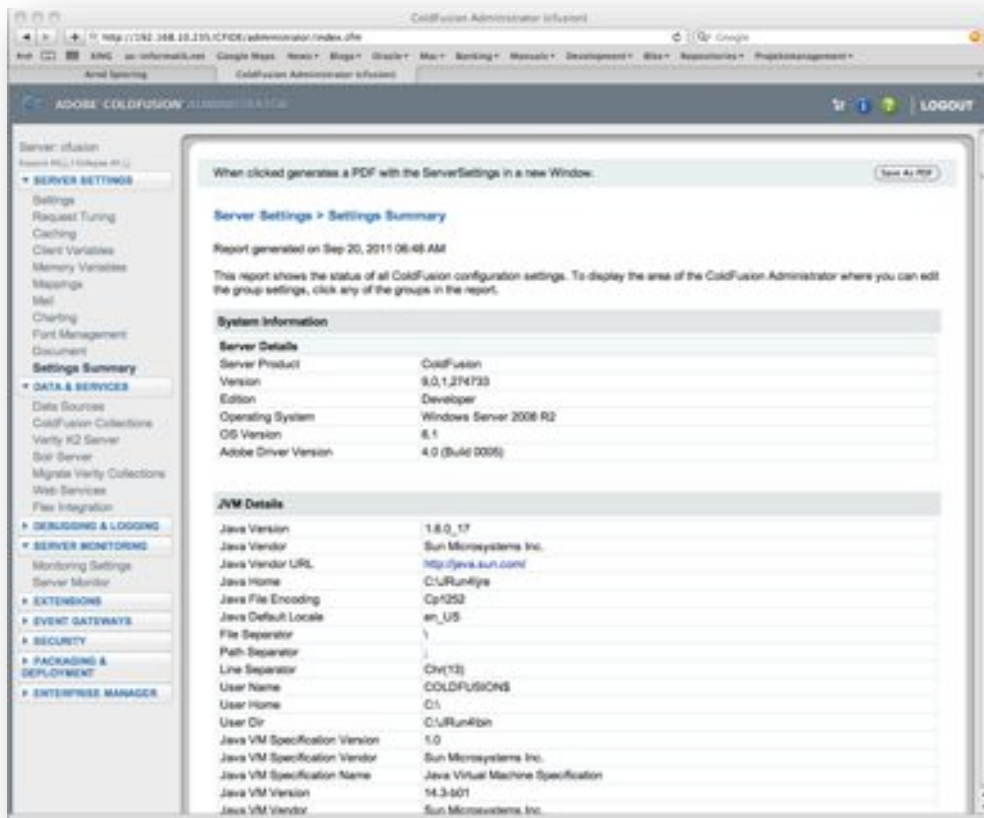
- Macromedia JRun Admin Server
- Macromedia JRun CFusion Server











The screenshot shows the ColdFusion Administrator web interface. The left sidebar contains a navigation menu with categories like SERVER SETTINGS, DATA & SERVICES, DEBUGGING & LOGGING, SERVER MONITORING, EXTENSIONS, EVENT GATEWAYS, SECURITY, PACKAGING & DEPLOYMENT, and ENTERPRISE MANAGER. The 'Settings Summary' link is highlighted under SERVER SETTINGS.

The main content area displays the 'Server Settings > Settings Summary' page. It includes a note about generating a PDF, a report generation timestamp, and a description of the report's purpose. Below this, there are two sections: 'System Information' and 'JVM Details', each containing a table of configuration parameters.

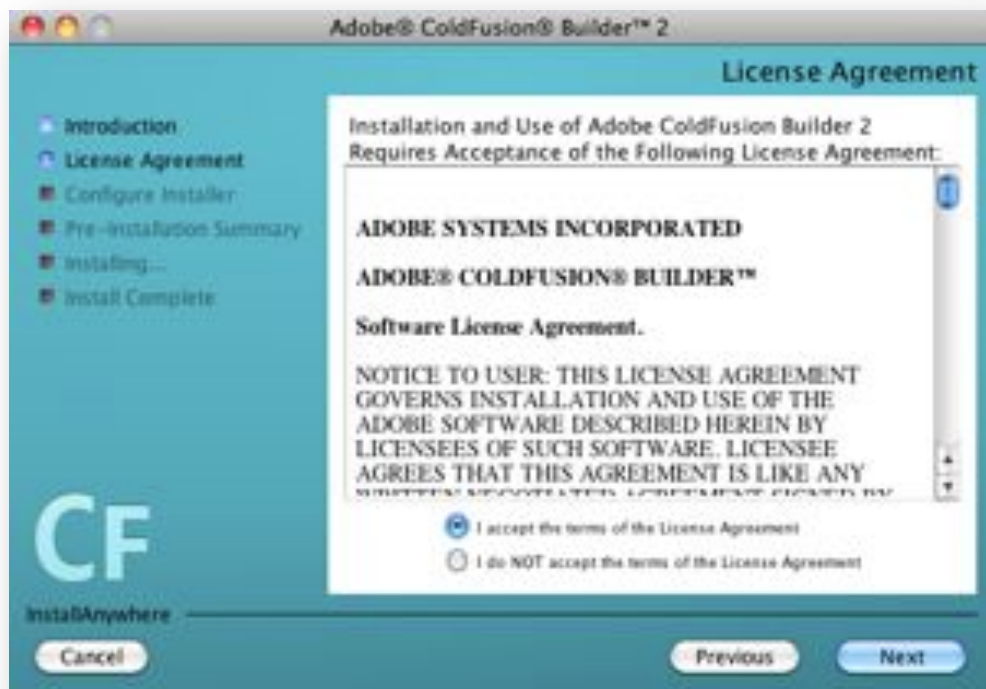
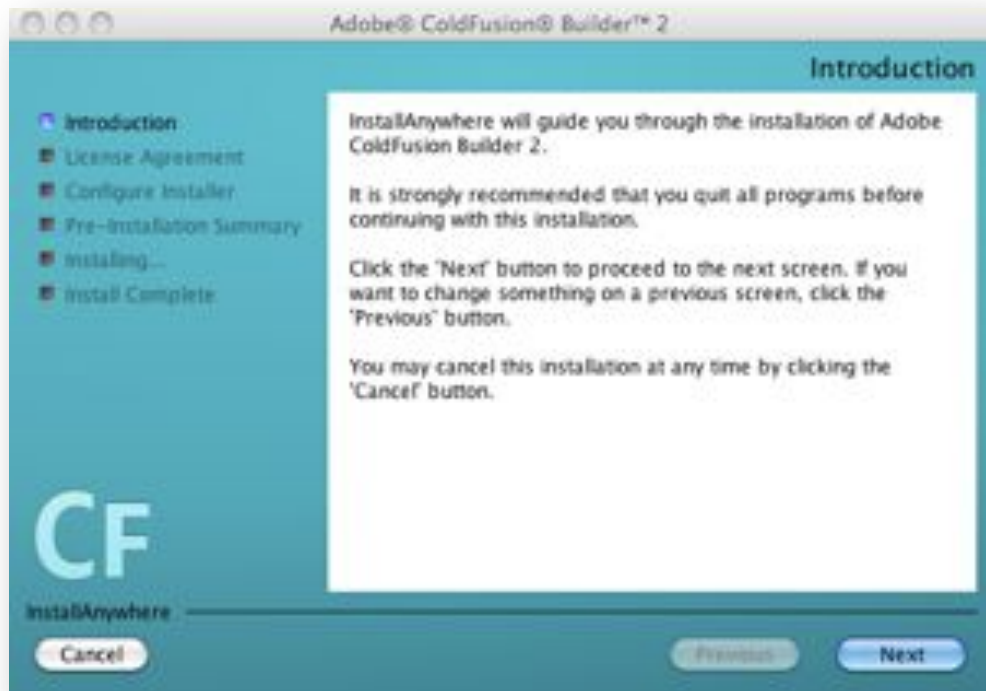
System Information

Server Details	
Server Product	ColdFusion
Version	9.0.1.274733
Edition	Developer
Operating System	Windows Server 2008 R2
OS Version	6.1
Adobe Driver Version	4.0 (Build 0005)

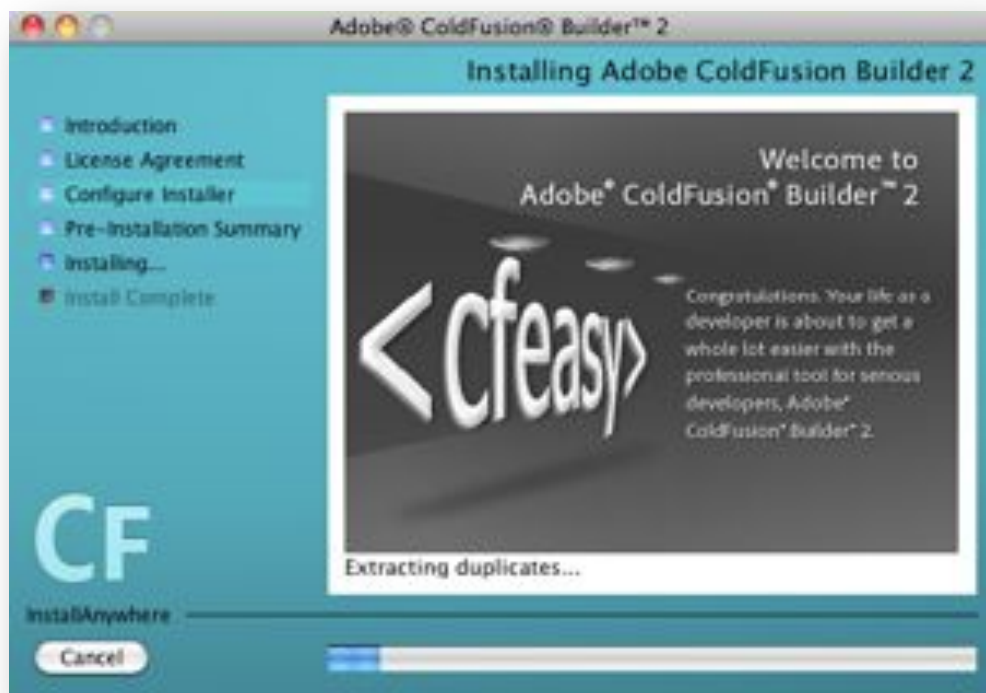
JVM Details

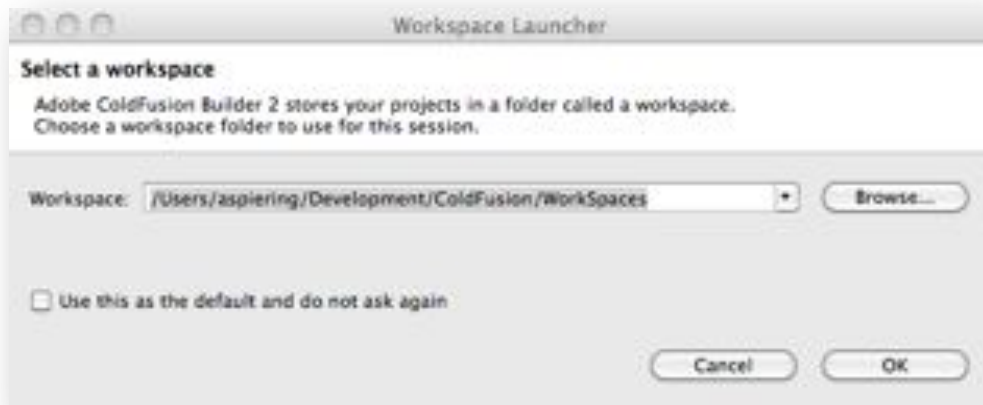
Java Version	1.8.0_17
Java Vendor	Sun Microsystems, Inc.
Java Vendor URL	http://java.sun.com/
Java Home	C:\Run4jre
Java File Encoding	Cp1252
Java Default Locale	en_US
File Separator	\
Path Separator	.
Line Separator	\n
User Name	COLDFUSION
User Home	C:\
User Dir	C:\Run4jbin
Java VM Specification Version	1.0
Java VM Specification Vendor	Sun Microsystems, Inc.
Java VM Specification Name	Java Virtual Machine Specification
Java VM Version	14.3-b01
Java VM Vendor	Sun Microsystems, Inc.

CondFusion Builder auf Mac OS X











Adobe ColdFusion Builder

Enter your Adobe ID

Need an Adobe ID?

[CREATE AN ADOBE ID](#)

Already have an Adobe ID?

Email (Adobe ID)
arnd.spiering@as-informatik.net

Password

[Forgot Password](#)

[SKIP THIS STEP](#) [BACK](#) [NEXT](#)



Adobe ColdFusion Builder

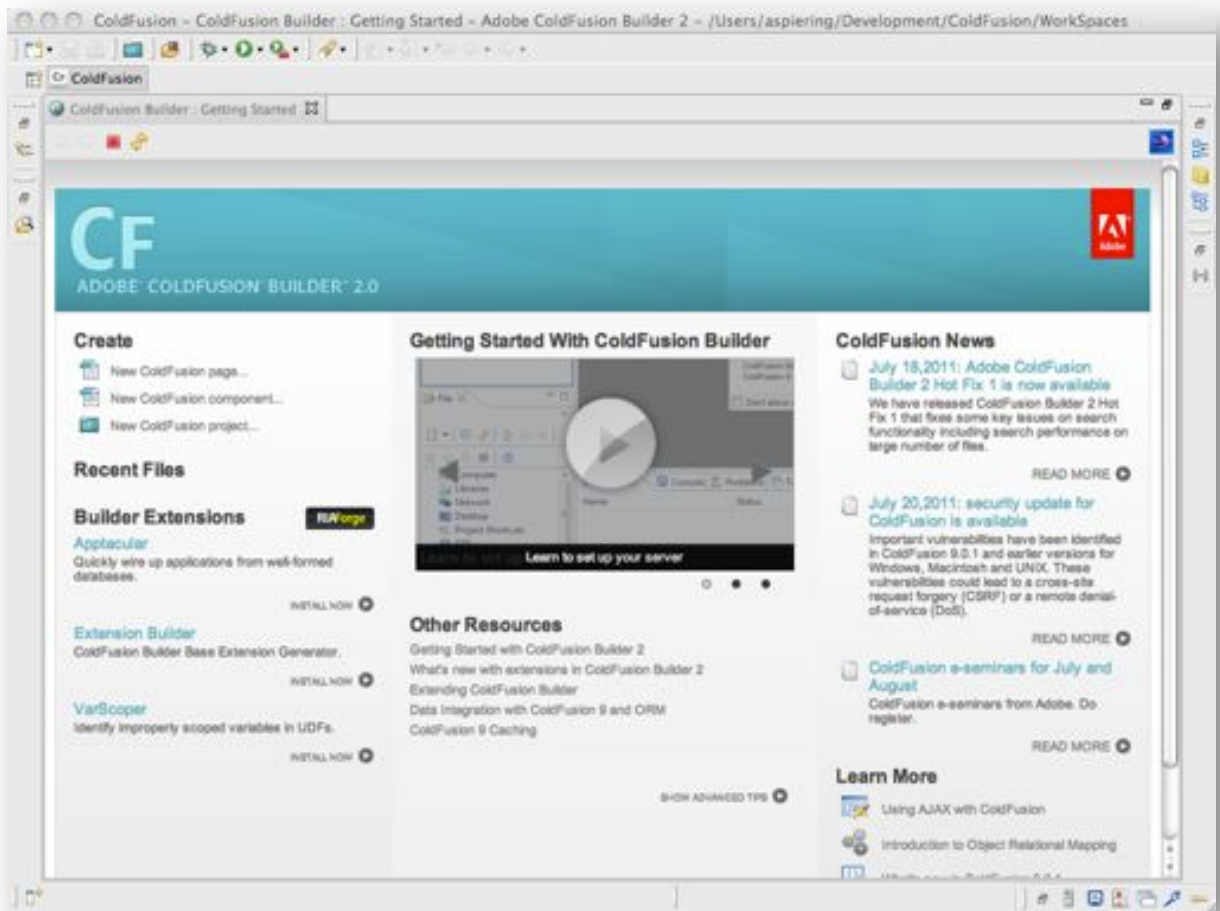
Thank You

Getting Started: Adobe Products

Thank you for providing your Adobe ID and letting us know of your interest in this product.
Your Adobe ID is: arnd.spiering@as-informatik.net

[View Video Tutorials](#)

[DONE](#)



Konfiguration ColdFusion Builder 2

http://help.adobe.com/en_US/ColdFusionBuilder/Using/WS0ef8c004658c1089-38317734121cdfd5fd3-7ffd.html

New ColdFusion Server Setup

Server Settings

Enter the host name (Examples: localhost, 10.19.2.32).

General Settings

Server Name: COLDFUSION Testserver

Description: Win 2008 Server , Coldfusion 9.0.1 auf Apache

Application Server: jrun

Host Name: 192.168.10.235

☐ Is Local ☒ Is Remote

WebServer Port: 80

J2EE Settings

Context Root:

Application Server Name:

Other Settings

RDS User Name:

RDS Password: *****

Enable SSL: ☐

☐ Auto Start ☐ Auto Stop

? < Back Next > Cancel Finish

Modify ColdFusion Server Setup

Server Settings

Enter server name.

General Settings

Server Name:

Description:

Application Server:

Host Name:

☐ Is Local ☒ Is Remote

WebServer Port:

J2EE Settings

Context Root:

Application Server Name:


Other Settings

RDS User Name:

RDS Password:

Enable SSL: ☐

☐ Auto Start ☐ Auto Stop





Naming Port ist 2910

User Name habe ich aus der der Datei jrun-users.xml auf dem Server entnommen

Document Root ist htdoc Ordner der Apache Installation



Nachdem die Konfigurationsmaske geschlossen wurde, dauert es wieder sehr lange, bis in der Server Übersicht der neu hinzugefügte Server den Status RUNNING hat.